

## INTERFERON EPSILON RABBIT PAB

**Cat.#:** N225178

**Product Name:** Anti-Interferon epsilon Rabbit pAb

**Synonyms:** IFNE; IFNE1; Interferon epsilon; IFN-epsilon; Interferon epsilon-1

**UNIPROT ID:** Q86WN2

**Background:** Type I interferon required for maintaining basal levels of IFN-regulated genes, including 2'-5'-oligoadenylate synthetase, IRF7 and ISG15, in the female reproductive tract.

**Immunogen:** The antiserum was produced against synthesized peptide derived from the C-terminal region of human IFNE. AA range:159-208

**Applications:** WB,ELISA

**Recommended Dilutions:** WB: 1/500-1/1000 ELISA: 1/10000

**Host Species:** Rabbit

**Clonality:** Rabbit Polyclonal

**Clone ID:** -

**MW:** Calculated MW: 24 kDa; Observed MW: 24 kDa

**Isotype:** IgG

**Purification:** Affinity Purified

**Species Reactivity:** Human

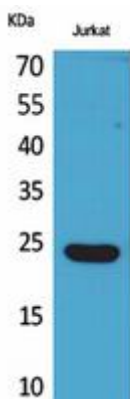
**Conjugation:** Unconjugated

**Modification:** Unmodified

**Constituents:** PBS (without Mg<sup>2+</sup> and Ca<sup>2+</sup>), pH 7.3 containing 50% glycerol, 0.5% BSA and 0.02% sodium azide

**Research Areas:** Immunology

**Storage & Shipping:** Store at -20°C. Avoid repeated freezing and thawing



Western blot analysis of Interferon epsilon in Jurkat lysates using Interferon epsilon antibody.



# Product Description

Pioneering GTPase and Oncogene Product Development since 2010

---