

IP6K2 RABBIT PAB

Cat.#: S219179

Product Name: Anti-IP6K2 Rabbit Polyclonal Antibody

Synonyms: PIUS; IHPK2

UNIPROT ID: Q9UHH9 (Gene Accession - BC004469)

Background: This gene encodes a protein that belongs to the inositol phosphokinase (IPK) family. This protein is likely responsible for the conversion of inositol hexakisphosphate (InsP₆) to diphosphoinositol pentakisphosphate (InsP₇/PP-InsP₅). It may also convert 1,3,4,5,6-pentakisphosphate (InsP₅) to PP-InsP₄ and affect the growth suppressive and apoptotic activities of interferon-beta in some ovarian cancers. Alternative splicing results in multiple transcript variants encoding different isoforms.

Immunogen: Fusion protein of human IP6K2

Applications: ELISA, WB, IHC

Recommended Dilutions: IHC: 200-400;WB: 500-2000;ELISA: 5000-10000

Host Species: Rabbit

Clonality: Rabbit Polyclonal

Isotype: Immunogen-specific rabbit IgG

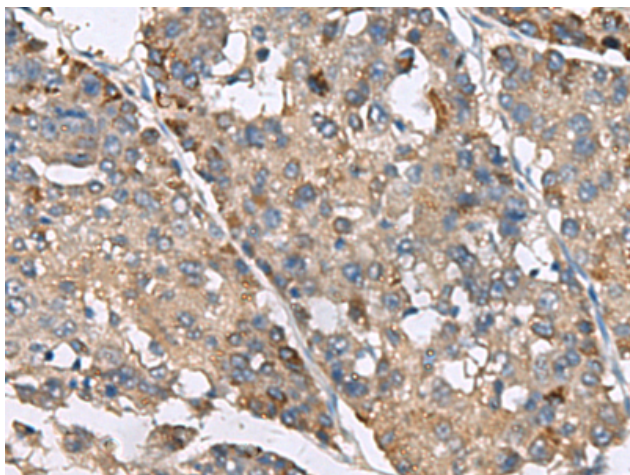
Purification: Antigen affinity purification

Species Reactivity: Human

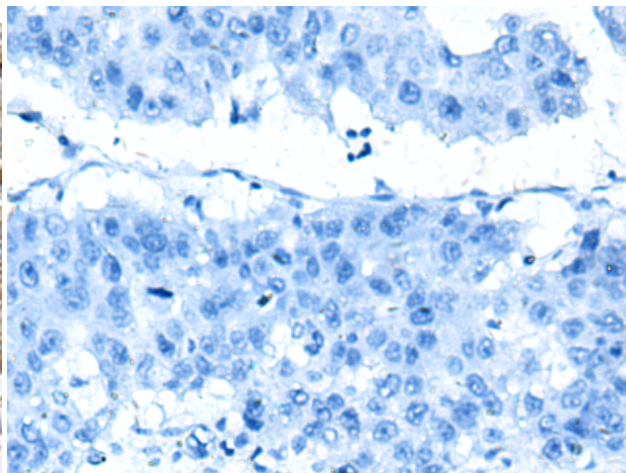
Constituents: PBS (without Mg²⁺ and Ca²⁺), pH 7.4, 150 mM NaCl, 0.05% Sodium Azide and 40% glycerol

Research Areas: Signal Transduction

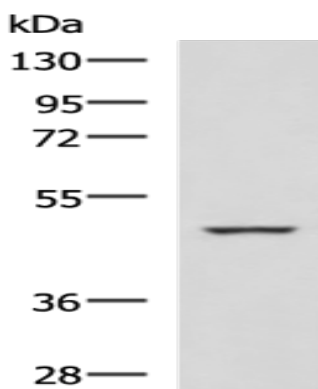
Storage & Shipping: Store at -20°C. Avoid repeated freezing and thawing



Immunohistochemistry analysis of paraffin embedded Human liver cancer tissue using 219179(IP6K2 Antibody) at a dilution of 1/220(Cytoplasm).



In comparison with the IHC on the left, the same paraffin-embedded Human liver cancer tissue is first treated with the fusion protein and then with 219179(Anti-IP6K2 Antibody) at dilution 1/220.



Gel: 8%SDS-PAGE, Lysate: 40 μ g;
Lane: K562 cell lysate;
Primary antibody: 219179(IP6K2 Antibody) at dilution 1/650;
Secondary antibody: HRP-conjugated Goat anti rabbit IgG at 1/5000 dilution;
Exposure time: 5 seconds