

## IPPK RABBIT PAB

**Cat.#:** S222242

**Product Name:** Anti-IPPK Rabbit Polyclonal Antibody

**Synonyms:** IP5K; IPK1; C9orf12; INSP5K2; bA476B13.1

**UNIPROT ID:** Q9H8X2 (Gene Accession - NP\_073592 )

**Background:** The protein encoded by this gene is a kinase that phosphorylates position 2 of inositol-1,3,4,5,6-pentakisphosphate to form inositol-1,2,3,4,5,6-hexakisphosphate (InsP6). InsP6 has a variety of functions, including stimulation of DNA repair, endocytosis, and mRNA export.

**Immunogen:** Synthetic peptide of human IPPK

**Applications:** ELISA, WB, IHC

**Recommended Dilutions:** IHC: 40-200;WB: 500-2000;ELISA: 5000-10000

**Host Species:** Rabbit

**Clonality:** Rabbit Polyclonal

**Isotype:** Immunogen-specific rabbit IgG

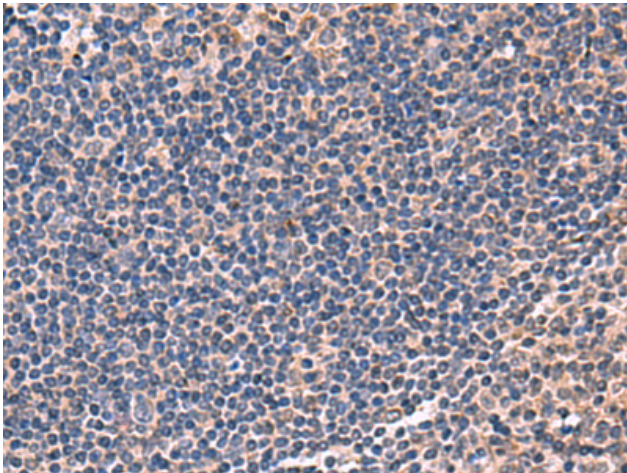
**Purification:** Antigen affinity purification

**Species Reactivity:** Human, Mouse, Rat

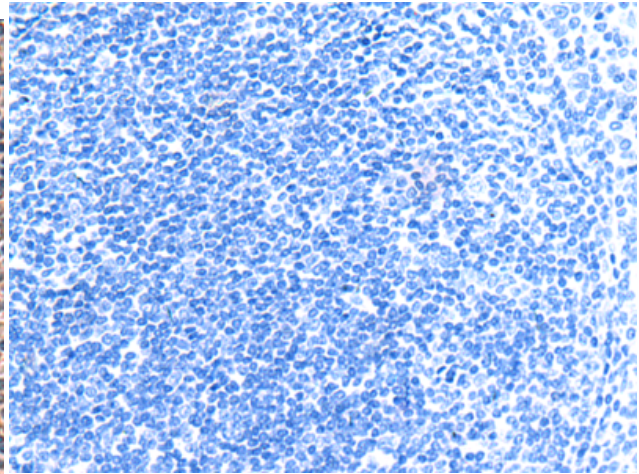
**Constituents:** PBS (without Mg<sup>2+</sup> and Ca<sup>2+</sup>), pH 7.4, 150 mM NaCl, 0.05% Sodium Azide and 40% glycerol

**Research Areas:** Signal Transduction

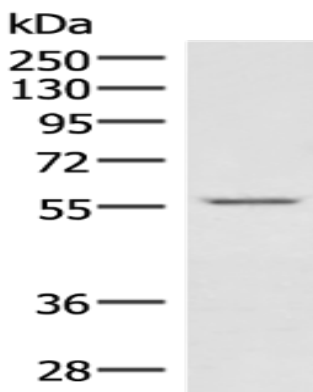
**Storage & Shipping:** Store at -20°C. Avoid repeated freezing and thawing



Immunohistochemistry analysis of paraffin embedded Human tonsil tissue using 222242(IPPK Antibody) at a dilution of 1/50(Cytoplasm ).



In comparison with the IHC on the left, the same paraffin-embedded Human tonsil tissue is first treated with the synthetic peptide and then with 222242(Anti-IPPK Antibody) at dilution 1/50.



Gel: 8%SDS-PAGE, Lysate: 40  $\mu$ g;  
Lane: Jurkat cell lysate;  
Primary antibody: 222242(IPPK Antibody) at dilution 1/550;  
Secondary antibody: Goat anti rabbit IgG at 1/8000 dilution;  
Exposure time: 8 minutes