

IQGAP2 RABBIT MAB

Cat.#: N263388

Product Name: Anti-IQGAP2 Rabbit Monoclonal Antibody

Synonyms: Ras GTPase-activating-like protein IQGAP2

UNIPROT ID: Q13576

Background: Binds to activated CDC42 and RAC1 but does not seem to stimulate their GTPase activity. Associates with calmodulin.

Immunogen: Recombinant protein of human IQGAP2

Applications: WB,IHC-P

Recommended Dilutions: WB: 1/500-1/1000 IHC: 1/50-1/100

Host Species: Rabbit

Clonality: Rabbit Monoclonal

Clone ID: R08-2C6

MW: Calculated MW: 181 kDa; Observed MW: 181 kDa

Isotype: IgG

Purification: Affinity Purified

Species Reactivity: Human

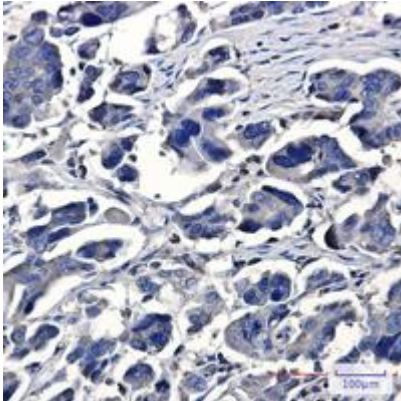
Conjugation: Unconjugated

Modification: Unmodified

Constituents: PBS (without Mg²⁺ and Ca²⁺), pH 7.3 containing 50% glycerol, 0.5% BSA and 0.02% sodium azide

Research Areas: Signal Transduction

Storage & Shipping: Store at -20°C. Avoid repeated freezing and thawing



Immunohistochemistry analysis of paraffin-embedded Human Cholangiocarcinoma using IQGAP2 antibody. High-pressure and temperature Sodium Citrate pH 6.0 was used for antigen retrieval.



Western blot analysis of IQGAP2 in A549, HL-60 lysates using IQGAP2 antibody.