

## IQSEC1 RABBIT PAB

**Cat.#:** S219410

**Product Name:** Anti-IQSEC1 Rabbit Polyclonal Antibody

**Synonyms:** BRAG2; GEP100; ARFGEP100; ARF-GEP100

**UNIPROT ID:** Q6DN90 (Gene Accession - BC010267 )

**Background:** Guanine nucleotide exchange factor for ARF1 and ARF6 (PubMed:24058294). Guanine nucleotide exchange factor activity is enhanced by lipid binding (PubMed:24058294). Accelerates GTP binding by ARFs of all three classes. Guanine nucleotide exchange protein for ARF6, mediating internalisation of beta-1 integrin.

**Immunogen:** Fusion protein of human IQSEC1

**Applications:** ELISA, IHC

**Recommended Dilutions:** IHC: 150-300; ELISA: 5000-10000

**Host Species:** Rabbit

**Clonality:** Rabbit Polyclonal

**Isotype:** Immunogen-specific rabbit IgG

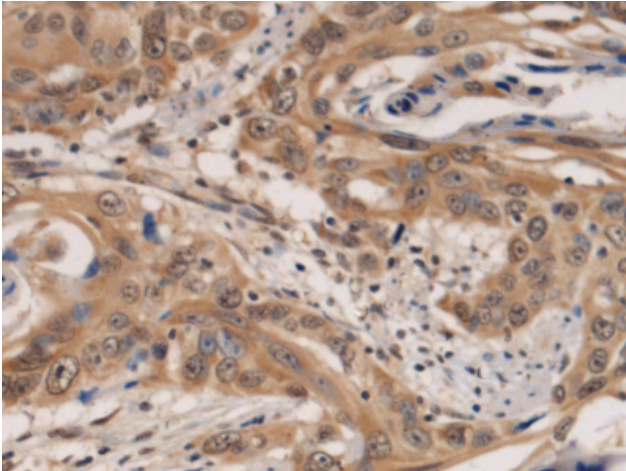
**Purification:** Antigen affinity purification

**Species Reactivity:** Human, Mouse

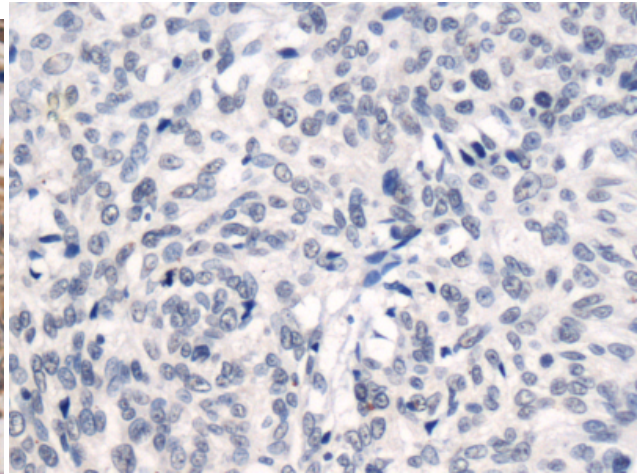
**Constituents:** PBS (without Mg<sup>2+</sup> and Ca<sup>2+</sup>), pH 7.4, 150 mM NaCl, 0.05% Sodium Azide and 40% glycerol

**Research Areas:** Signal Transduction

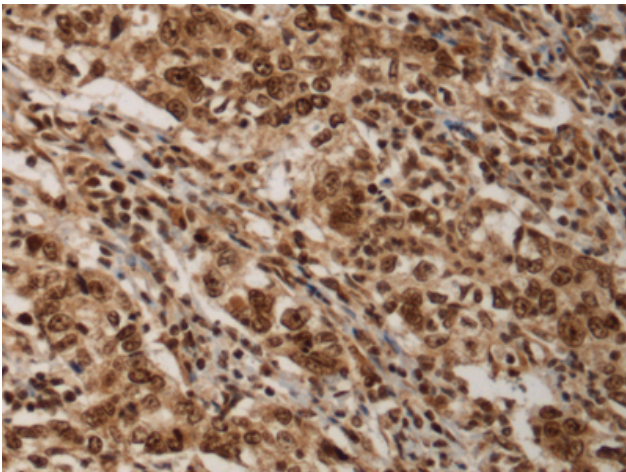
**Storage & Shipping:** Store at -20°C. Avoid repeated freezing and thawing



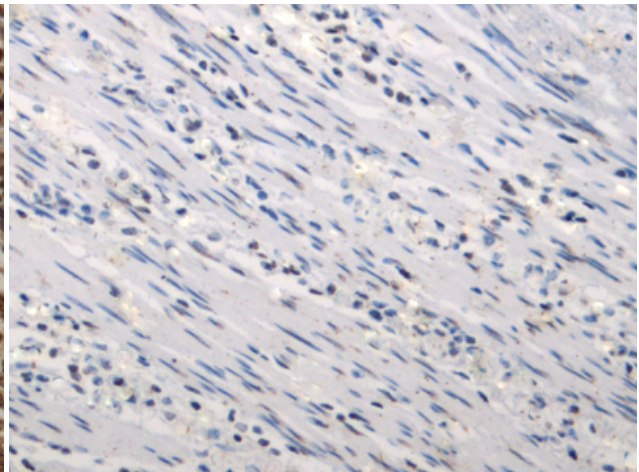
Immunohistochemistry analysis of paraffin embedded Human esophagus cancer tissue using 219410(IQSEC1 Antibody) at a dilution of 1/125(Cytoplasm or Nucleus).



In comparison with the IHC on the left, the same paraffin-embedded Human esophagus cancer tissue is first treated with the fusion protein and then with 219410(Anti-IQSEC1 Antibody) at dilution 1/125.



The image on the left is immunohistochemistry of paraffin-embedded Human gastric cancer tissue using 219410(Anti-IQSEC1 Antibody) at a dilution of 1/125.



In comparison with the IHC on the left, the same paraffin-embedded Human gastric cancer tissue is first treated with fusion protein and then with D226810(Anti-IQSEC1 Antibody) at dilution 1/125.