

## IRGC RABBIT PAB

**Cat.#:** S222245

**Product Name:** Anti-IRGC Rabbit Polyclonal Antibody

**Synonyms:** IFGGE; IRGC1; Iigp5; CINEMA; R30953\_1

**UNIPROT ID:** Q6NXR0 (Gene Accession - NP\_062558 )

**Background:** Immunity-related GTPases (IRG) (also known as p47 GTPases) are a family of GTPase proteins found in vertebrates, which play critical roles in mediating innate resistance to intracellular pathogens. IRG genes have been found in a number of mammals and lower species including mice, rats, zebrafish and humans. Most of the mouse genes contain interferon-stimulated response elements which mediate transcriptional activation by IFNs. In humans, only two IRG genes have been found: human IRGC encodes a full-length IRG protein that, like the mouse homologue, is constitutively expressed in testis, while human IRGM encodes a considerably truncated protein that is constitutively expressed in cultured cells including some macrophage cell lines. As the two human genes IRGC and IRGM are not subject to IFN control, it has been suggested that the host resistance mechanism supported by IRG proteins in the mouse is lacking in humans.

**Immunogen:** Synthetic peptide of human IRGC

**Applications:** ELISA, WB, IHC

**Recommended Dilutions:** IHC: 30-150;WB: 200-1000;ELISA: 5000-10000

**Host Species:** Rabbit

**Clonality:** Rabbit Polyclonal

**Isotype:** Immunogen-specific rabbit IgG

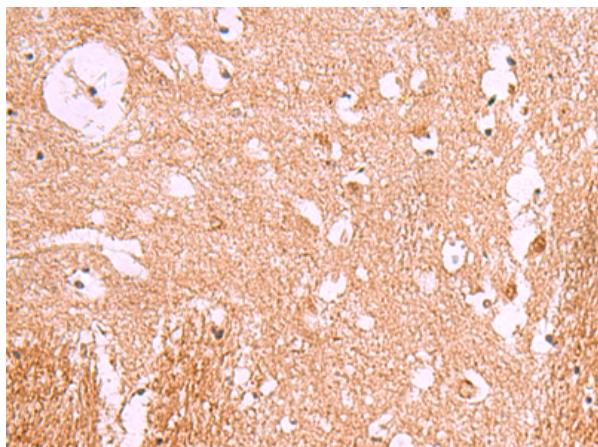
**Purification:** Antigen affinity purification

**Species Reactivity:** Human, Mouse, Rat

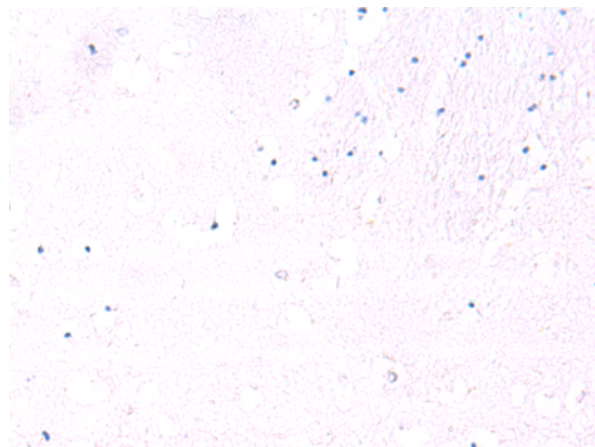
**Constituents:** PBS (without Mg<sup>2+</sup> and Ca<sup>2+</sup>), pH 7.4, 150 mM NaCl, 0.05% Sodium Azide and 40% glycerol

**Research Areas:** Signal Transduction

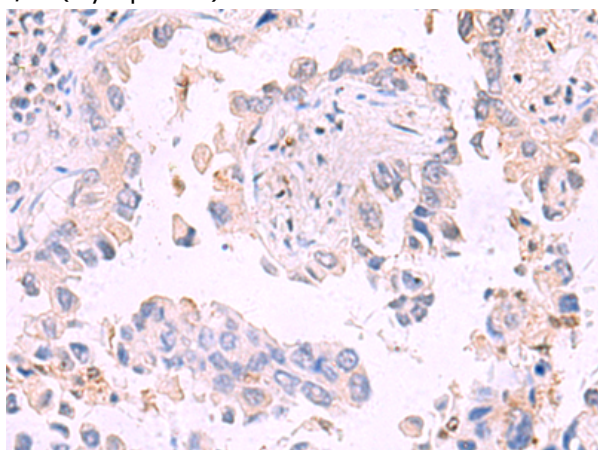
**Storage & Shipping:** Store at -20°C. Avoid repeated freezing and thawing



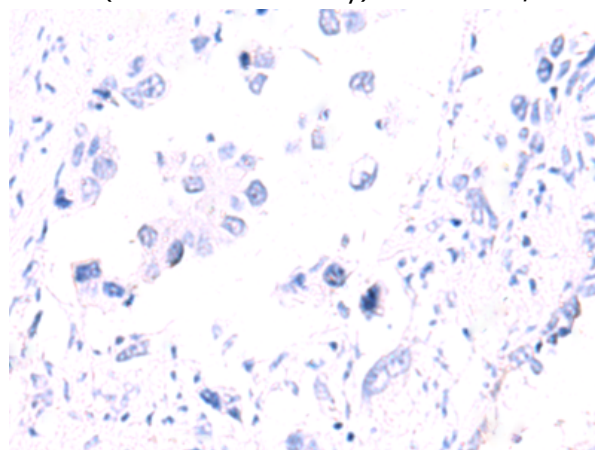
Immunohistochemistry analysis of paraffin embedded Human tonsil tissue using 222245(IRGC Antibody) at a dilution of 1/35(Cytoplasm).



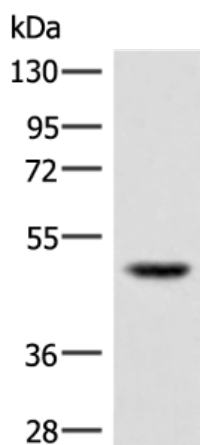
In comparison with the IHC on the left, the same paraffin-embedded Human tonsil tissue is first treated with the synthetic peptide and then with 222245(Anti-IRGC Antibody) at dilution 1/35.



The image on the left is immunohistochemistry of paraffin-embedded Human lung cancer tissue using 222245(Anti-IRGC Antibody) at a dilution of 1/35.



In comparison with the IHC on the left, the same paraffin-embedded Human lung cancer tissue is first treated with synthetic peptide and then with D264272(Anti-IRGC Antibody) at dilution 1/35.



Gel: 8%SDS-PAGE, Lysate: 40 µg;  
Lane: TM4 cell lysate;  
Primary antibody: 222245(IRGC Antibody) at dilution 1/300;  
Secondary antibody: Goat anti rabbit IgG at 1/8000 dilution;  
Exposure time: 20 seconds



# Product Description

Pioneering GTPase and Oncogene Product Development since 2010

---