

IRX3 RABBIT PAB

Cat.#: S222246

Product Name: Anti-IRX3 Rabbit Polyclonal Antibody

Synonyms: IRX-1; IRXB1

UNIPROT ID: P78415 (Gene Accession - NP_077312)

Background: IRX3 is a member of the Iroquois homeobox gene family and plays a role in an early step of neural development. Members of this family appear to play multiple roles during pattern formation of vertebrate embryos.

Immunogen: Synthetic peptide of human IRX3

Applications: ELISA, WB, IHC

Recommended Dilutions: IHC: 25-100;WB: 300-1000;ELISA: 5000-10000

Host Species: Rabbit

Clonality: Rabbit Polyclonal

Isotype: Immunogen-specific rabbit IgG

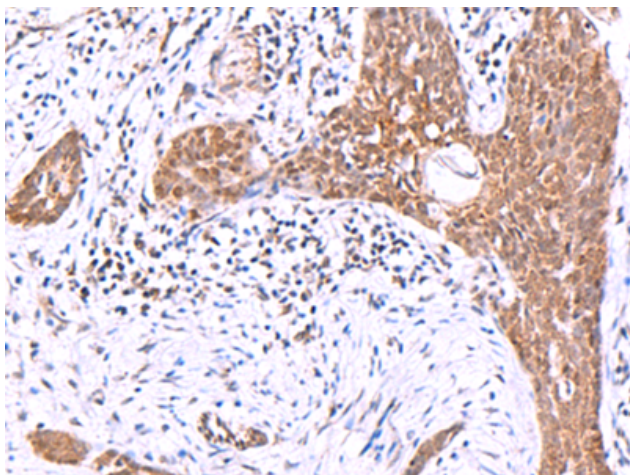
Purification: Antigen affinity purification

Species Reactivity: Human, Mouse

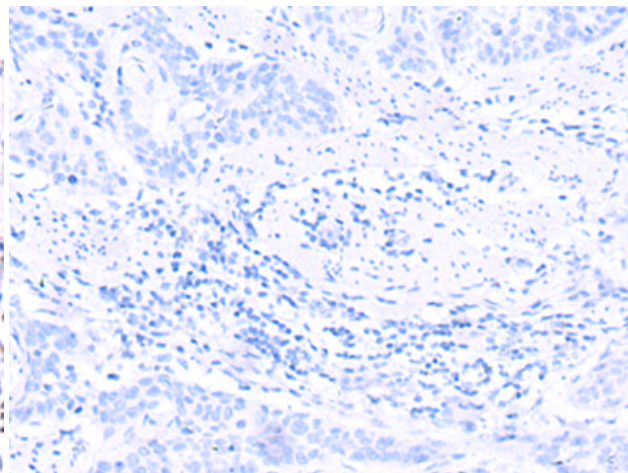
Constituents: PBS (without Mg²⁺ and Ca²⁺), pH 7.4, 150 mM NaCl, 0.05% Sodium Azide and 40% glycerol

Research Areas: Neuroscience

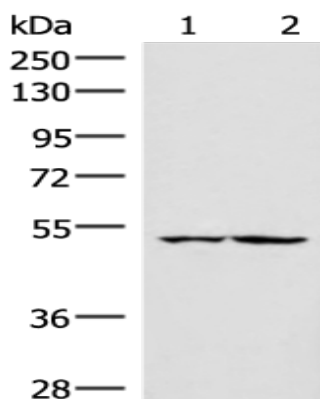
Storage & Shipping: Store at -20°C. Avoid repeated freezing and thawing



Immunohistochemistry analysis of paraffin embedded Human esophagus cancer tissue using 222246 (IRX3 Antibody) at a dilution of 1/30 (Nucleus).



In comparison with the IHC on the left, the same paraffin-embedded Human esophagus cancer tissue is first treated with the synthetic peptide and then with 222246 (Anti-IRX3 Antibody) at dilution 1/30.



Gel: 8% SDS-PAGE, Lysate: 40 μ g;
 Lane 1-2: HepG2 and Jurkat cell lysates;
 Primary antibody: 222246 (IRX3 Antibody) at dilution 1/300;
 Secondary antibody: Goat anti rabbit IgG at 1/8000 dilution;
 Exposure time: 30 seconds