

IRX5 RABBIT PAB

Cat.#: S216018

Product Name: Anti-IRX5 Rabbit Polyclonal Antibody

Synonyms: HMMS; IRXB2; IRX-2a

UNIPROT ID: P78411 (Gene Accession - NP_005844)

Background: This gene encodes a member of the iroquois homeobox gene family, which are involved in several embryonic developmental processes. Knockout mice lacking this gene show that it is required for retinal cone bipolar cell differentiation, and that it negatively regulates potassium channel gene expression in the heart to ensure coordinated cardiac repolarization. Alternatively spliced transcript variants encoding different isoforms have been found for this gene.

Immunogen: Synthetic peptide of human IRX5

Applications: ELISA, WB, IHC

Recommended Dilutions: IHC: 30-150;WB: 200-1000;ELISA: 5000-10000

Host Species: Rabbit

Clonality: Rabbit Polyclonal

Isotype: Immunogen-specific rabbit IgG

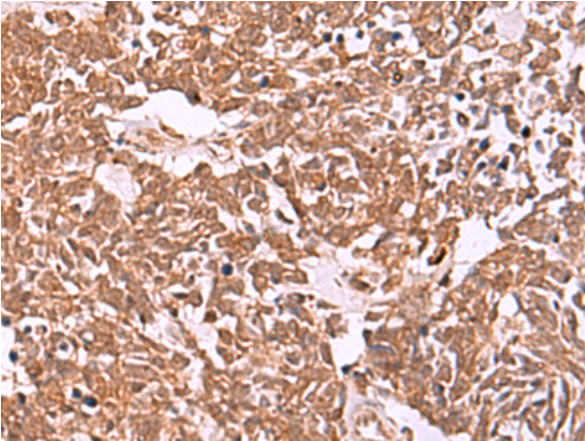
Purification: Antigen affinity purification

Species Reactivity: Human, Mouse

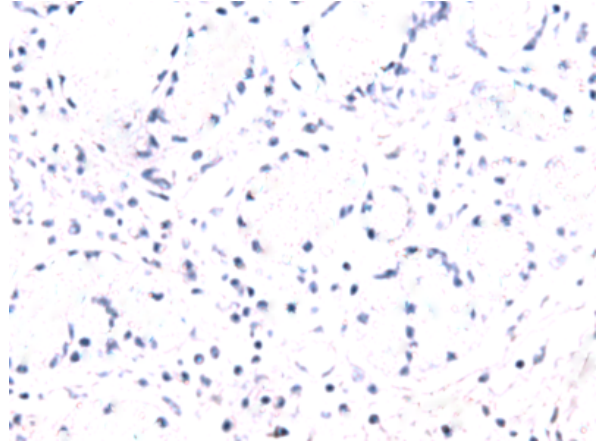
Constituents: PBS (without Mg²⁺ and Ca²⁺), pH 7.4, 150 mM NaCl, 0.05% Sodium Azide and 40% glycerol

Research Areas: Epigenetics and Nuclear Signaling, Neuroscience, Cardiovascular

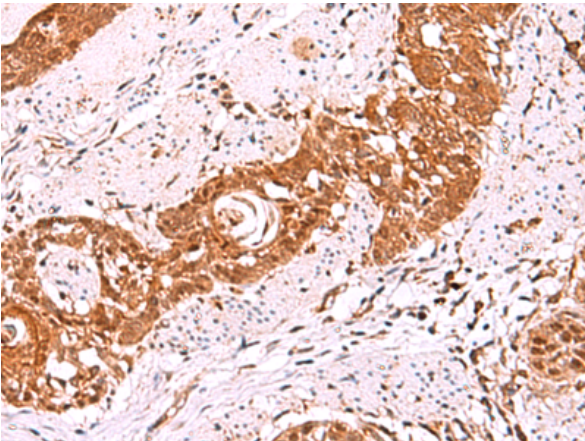
Storage & Shipping: Store at -20°C. Avoid repeated freezing and thawing



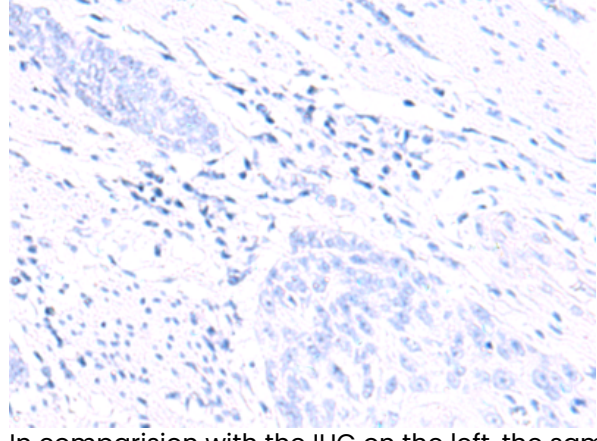
Immunohistochemistry analysis of paraffin embedded Human lung cancer tissue using 216018(IRX5 Antibody) at a dilution of 1/30(Nucleus).



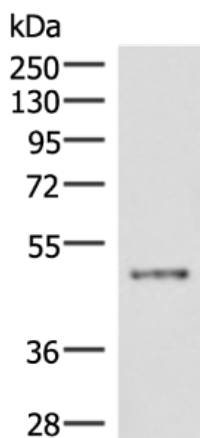
In comparison with the IHC on the left, the same paraffin-embedded Human lung cancer tissue is first treated with the synthetic peptide and then with 216018(Anti-IRX5 Antibody) at dilution 1/30.



The image on the left is immunohistochemistry of paraffin-embedded Human esophagus cancer tissue using 216018(Anti-IRX5 Antibody) at a dilution of 1/30.



In comparison with the IHC on the left, the same paraffin-embedded Human esophagus cancer tissue is first treated with synthetic peptide and then with D164277(Anti-IRX5 Antibody) at dilution 1/30.



Gel: 8%SDS-PAGE, Lysate: 40 µg;
Lane: Mouse lung tissue lysate;
Primary antibody: 216018(IRX5 Antibody) at dilution 1/300;
Secondary antibody: Goat anti rabbit IgG at 1/8000 dilution;
Exposure time: 4 minutes



Product Description

Pioneering GTPase and Oncogene Product Development since 2010
