

## IRX6 RABBIT PAB

**Cat.#:** S222250

**Product Name:** Anti-IRX6 Rabbit Polyclonal Antibody

**Synonyms:** IRX7; IRX-3; IRXB3

**UNIPROT ID:** P78412 (Gene Accession - NP\_077311 )

**Background:** IRX6 is one Iroquois (Irx) proteins comprise a family of homeodomain-containing transcription factors involved in patterning and regionalization of embryonic tissues in both vertebrates and invertebrates.

**Immunogen:** Synthetic peptide of human IRX6

**Applications:** ELISA, IHC

**Recommended Dilutions:** IHC: 20-100; ELISA: 5000-10000

**Host Species:** Rabbit

**Clonality:** Rabbit Polyclonal

**Isotype:** Immunogen-specific rabbit IgG

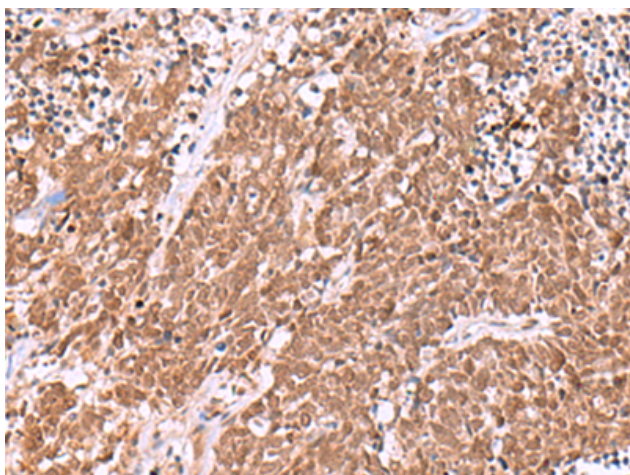
**Purification:** Antigen affinity purification

**Species Reactivity:** Human

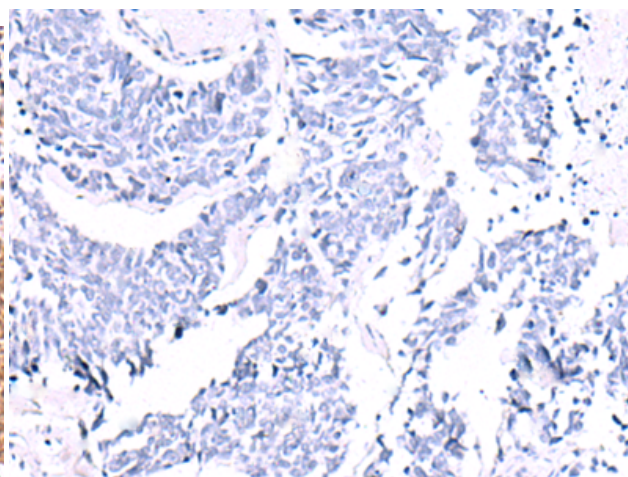
**Constituents:** PBS (without Mg<sup>2+</sup> and Ca<sup>2+</sup>), pH 7.4, 150 mM NaCl, 0.05% Sodium Azide and 40% glycerol

**Research Areas:** Epigenetics and Nuclear Signaling

**Storage & Shipping:** Store at -20°C. Avoid repeated freezing and thawing



Immunohistochemistry analysis of paraffin embedded Human lung cancer tissue using 222250 (IRX6 Antibody) at a dilution of 1/20 (Nucleus).



In comparison with the IHC on the left, the same paraffin-embedded Human lung cancer tissue is first treated with the synthetic peptide and then with 222250 (Anti-IRX6 Antibody) at dilution 1/20.