

## ISM2 RABBIT PAB

**Cat.#:** S221013

**Product Name:** Anti-ISM2 Rabbit Polyclonal Antibody

**Synonyms:** TAIL1; THSD3

**UNIPROT ID:** Q6H9L7 (Gene Accession - NP\_954993 )

**Background:** The protein encoded by this gene contains a type 1 thrombospondin domain, which is present in thrombospondin, a number of proteins involved in the complement pathway, as well as in extracellular matrix proteins. Two alternatively spliced transcript variants encoding distinct isoforms have been observed.

**Immunogen:** Synthetic peptide of human ISM2

**Applications:** ELISA, WB, IHC

**Recommended Dilutions:** IHC: 25-100;WB: 200-1000;ELISA: 1000-2000

**Host Species:** Rabbit

**Clonality:** Rabbit Polyclonal

**Isotype:** Immunogen-specific rabbit IgG

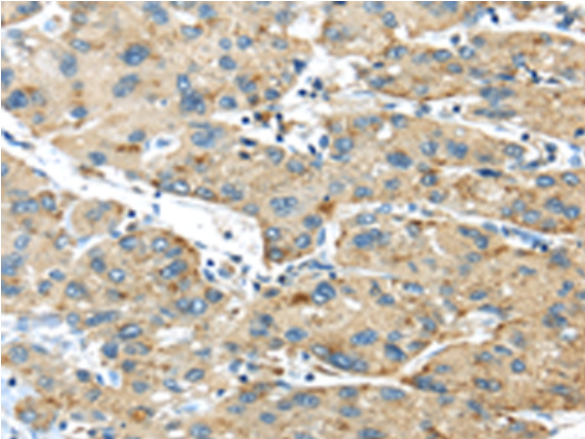
**Purification:** Antigen affinity purification

**Species Reactivity:** Human

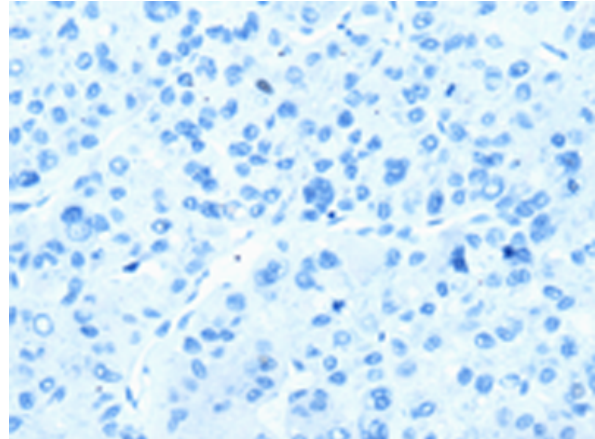
**Constituents:** PBS (without Mg<sup>2+</sup> and Ca<sup>2+</sup>), pH 7.4, 150 mM NaCl, 0.05% Sodium Azide and 40% glycerol

**Research Areas:** Immunology

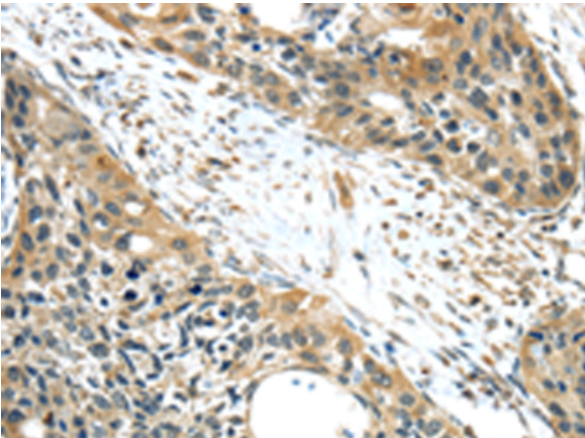
**Storage & Shipping:** Store at -20°C. Avoid repeated freezing and thawing



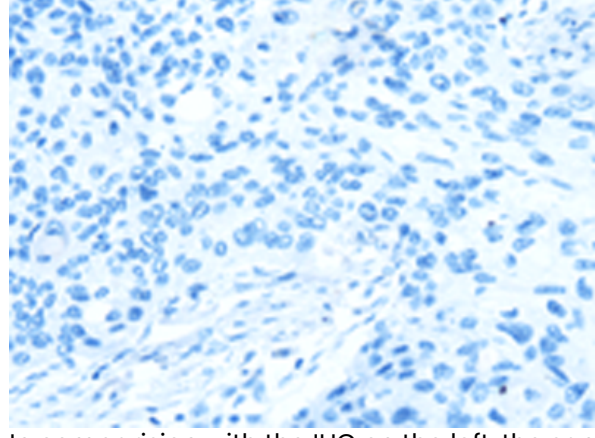
Immunohistochemistry analysis of paraffin embedded Human liver cancer tissue using 221013(ISM2 Antibody) at a dilution of 1/40(Secreted).



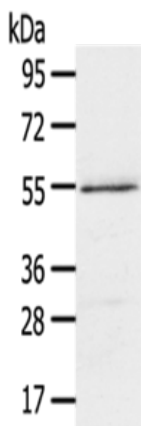
In comparison with the IHC on the left, the same paraffin-embedded Human liver cancer tissue is first treated with the synthetic peptide and then with 221013(Anti-ISM2 Antibody) at dilution 1/40.



The image on the left is immunohistochemistry of paraffin-embedded Human esophagus cancer tissue using 221013(Anti-ISM2 Antibody) at a dilution of 1/40.



In comparison with the IHC on the left, the same paraffin-embedded Human esophagus cancer tissue is first treated with synthetic peptide and then with D262359(Anti-ISM2 Antibody) at dilution 1/40.



Gel: 8%SDS-PAGE, Lysate: 40 µg;  
 Lane: 293T cells;  
 Primary antibody: 221013(ISM2 Antibody) at dilution 1/300;  
 Secondary antibody: Goat anti rabbit IgG at 1/8000 dilution;  
 Exposure time: 1 minute



# Product Description

Pioneering GTPase and Oncogene Product Development since 2010

---