

## ISOC2 RABBIT PAB

**Cat.#:** S218836

**Product Name:** Anti-ISOC2 Rabbit Polyclonal Antibody

**Synonyms:**

**UNIPROT ID:** Q96AB3 (Gene Accession - BC017344 )

**Background:** The exact function of ISOC2 remains unknown.

**Immunogen:** Fusion protein of human ISOC2

**Applications:** ELISA, IHC

**Recommended Dilutions:** IHC: 100-300; ELISA: 5000-10000

**Host Species:** Rabbit

**Clonality:** Rabbit Polyclonal

**Isotype:** Immunogen-specific rabbit IgG

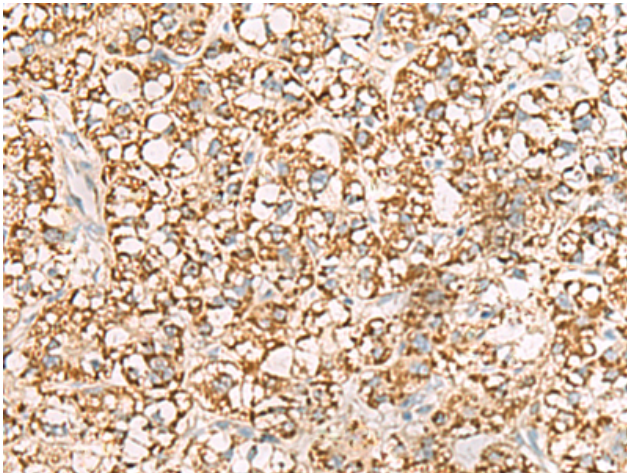
**Purification:** Antigen affinity purification

**Species Reactivity:** Human, Mouse

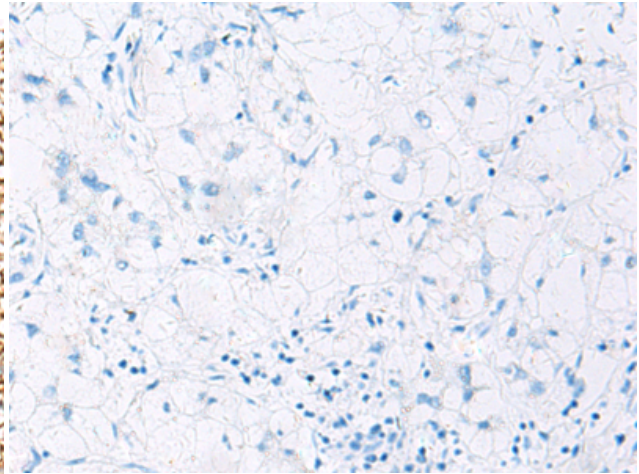
**Constituents:** PBS (without Mg<sup>2+</sup> and Ca<sup>2+</sup>), pH 7.4, 150 mM NaCl, 0.05% Sodium Azide and 40% glycerol

**Research Areas:** Epigenetics and Nuclear Signaling, Cancer

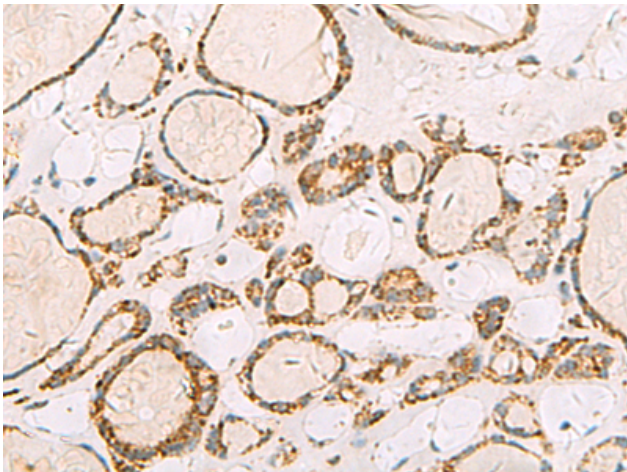
**Storage & Shipping:** Store at -20°C. Avoid repeated freezing and thawing



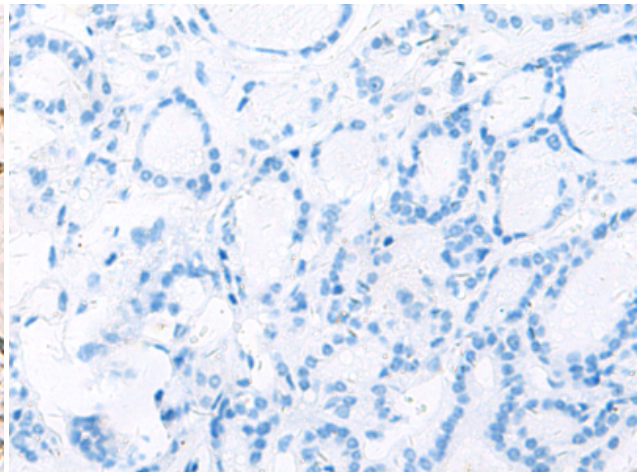
Immunohistochemistry analysis of paraffin embedded Human liver cancer tissue using 218836 (ISOC2 Antibody) at a dilution of 1/95 (Cytoplasm).



In comparison with the IHC on the left, the same paraffin-embedded Human liver cancer tissue is first treated with the fusion protein and then with 218836 (Anti-ISOC2 Antibody) at dilution 1/95.



The image on the left is immunohistochemistry of paraffin-embedded Human thyroid cancer tissue using 218836 (Anti-ISOC2 Antibody) at a dilution of 1/95.



In comparison with the IHC on the left, the same paraffin-embedded Human thyroid cancer tissue is first treated with fusion protein and then with D225314 (Anti-ISOC2 Antibody) at dilution 1/95.