

ISYNA1 RABBIT PAB

Cat.#: S219397

Product Name: Anti-ISYNA1 Rabbit Polyclonal Antibody

Synonyms: IPS; INO1; INOS; IPS 1; IPS-1

UNIPROT ID: Q9NPH2 (Gene Accession - BC018952)

Background: This gene encodes an inositol-3-phosphate synthase enzyme. The encoded protein plays a critical role in the myo-inositol biosynthesis pathway by catalyzing the rate-limiting conversion of glucose 6-phosphate to myoinositol 1-phosphate. Alternatively spliced transcript variants encoding multiple isoforms have been observed for this gene, and a pseudogene of this gene is located on the short arm of chromosome 4.

Immunogen: Fusion protein of human ISYNA1

Applications: ELISA, WB, IHC

Recommended Dilutions: IHC: 50-200;WB: 500-2000;ELISA: 5000-10000

Host Species: Rabbit

Clonality: Rabbit Polyclonal

Isotype: Immunogen-specific rabbit IgG

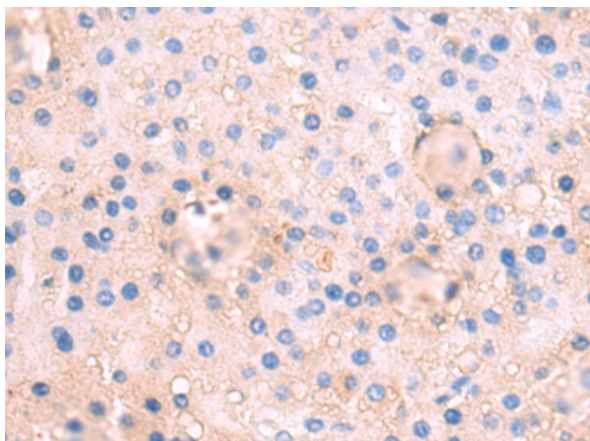
Purification: Antigen affinity purification

Species Reactivity: Human, Mouse, Rat

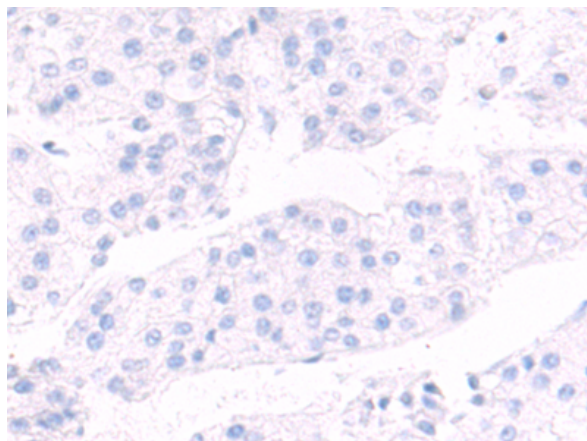
Constituents: PBS (without Mg²⁺ and Ca²⁺), pH 7.4, 150 mM NaCl, 0.05% Sodium Azide and 40% glycerol

Research Areas: Signal Transduction, Cardiovascular, Metabolism

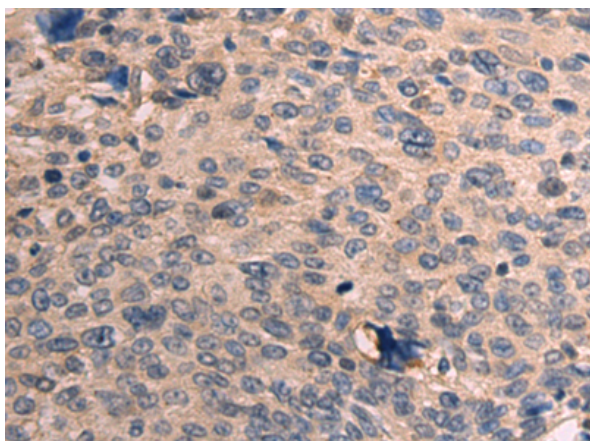
Storage & Shipping: Store at -20°C. Avoid repeated freezing and thawing



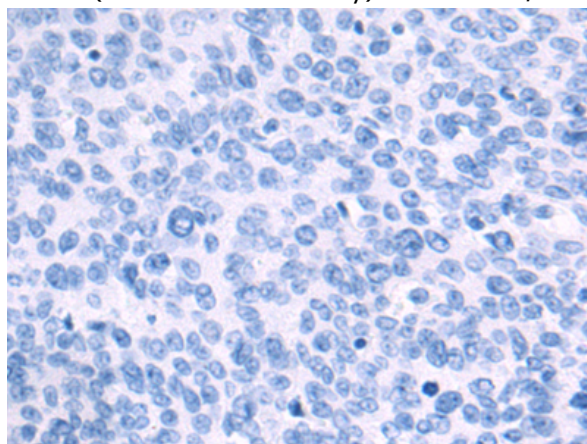
Immunohistochemistry analysis of paraffin embedded Human liver cancer tissue using 219397(ISYNA1 Antibody) at a dilution of 1/90(Cytoplasm).



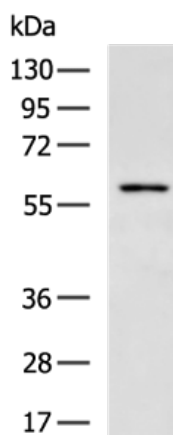
In comparison with the IHC on the left, the same paraffin-embedded Human liver cancer tissue is first treated with the fusion protein and then with 219397(Anti-ISYNA1 Antibody) at dilution 1/90.



The image on the left is immunohistochemistry of paraffin-embedded Human cervical cancer tissue using 219397(Anti-ISYNA1 Antibody) at a dilution of 1/90.



In comparison with the IHC on the left, the same paraffin-embedded Human cervical cancer tissue is first treated with fusion protein and then with D226736(Anti-ISYNA1 Antibody) at dilution 1/90.



Gel: 8%SDS-PAGE, Lysate: 40 µg;
Lane: Human placenta tissue lysate;
Primary antibody: 219397(ISYNA1 Antibody) at dilution 1/700;
Secondary antibody: HRP-conjugated Goat anti rabbit IgG at 1/5000 dilution;
Exposure time: 1 minute



Product Description

Pioneering GTPase and Oncogene Product Development since 2010
