

ITGA3 RABBIT PAB

Cat.#: S222231

Product Name: Anti-ITGA3 Rabbit Polyclonal Antibody

Synonyms: JEB7; VL3A; CD49C; FRP-2; GAPB3; ILNEB; MSK18; VCA-2; VLA3a; GAP-B3

UNIPROT ID: P26006 (Gene Accession - NP_002195)

Background: The gene encodes a member of the integrin alpha chain family of proteins. Integrins are heterodimeric integral membrane proteins composed of an alpha chain and a beta chain that function as cell surface adhesion molecules. The encoded preproprotein is proteolytically processed to generate light and heavy chains that comprise the alpha 3 subunit. This subunit joins with a beta 1 subunit to form an integrin that interacts with extracellular matrix proteins including members of the laminin family. Expression of this gene may be correlated with breast cancer metastasis.

Immunogen: Synthetic peptide of human ITGA3

Applications: ELISA, IHC

Recommended Dilutions: IHC: 50-200; ELISA: 5000-10000

Host Species: Rabbit

Clonality: Rabbit Polyclonal

Isotype: Immunogen-specific rabbit IgG

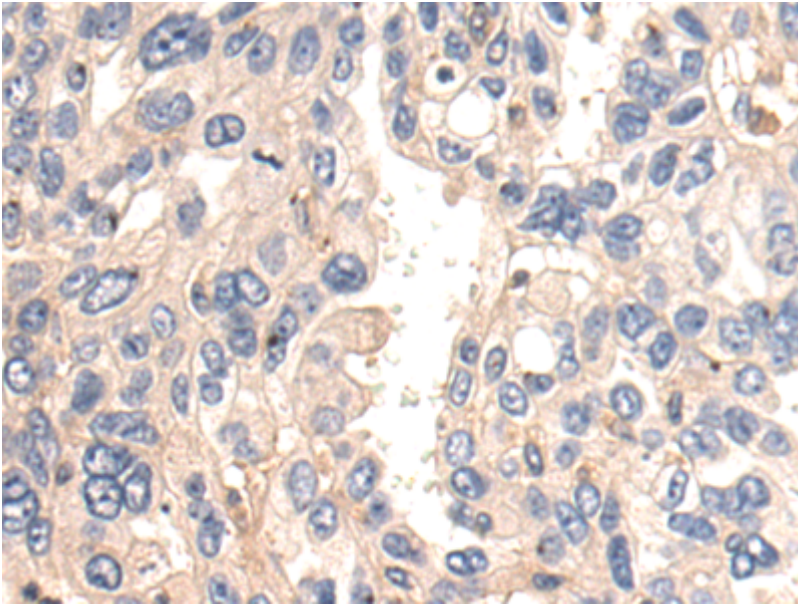
Purification: Antigen affinity purification

Species Reactivity: Human, Mouse

Constituents: PBS (without Mg²⁺ and Ca²⁺), pH 7.4, 150 mM NaCl, 0.05% Sodium Azide and 40% glycerol

Research Areas: Signal Transduction

Storage & Shipping: Store at -20°C. Avoid repeated freezing and thawing



Immunohistochemistry analysis of paraffin-embedded Human breast cancer tissue using 222231(ITGA3 Antibody) at a dilution of 1/50(Cytoplasm and Cell membrane).