

ITGA4 RABBIT PAB

Cat.#: S216600

Product Name: Anti-ITGA4 Rabbit Polyclonal Antibody

Synonyms: IA4; CD49D

UNIPROT ID: P13612 (Gene Accession - BC080190)

Background: The gene encodes a member of the integrin alpha chain family of proteins. Integrins are heterodimeric integral membrane proteins composed of an alpha chain and a beta chain that function in cell surface adhesion and signaling. The encoded preproprotein is proteolytically processed to generate light and heavy chains that comprise the alpha 4 subunit. This subunit associates with a beta 1 or beta 7 subunit to form an integrin that may play a role in cell motility and migration. This integrin is a therapeutic target for the treatment of multiple sclerosis, Crohn's disease and inflammatory bowel disease. Alternative splicing results in multiple transcript variants.

Immunogen: Fusion protein of human ITGA4

Applications: ELISA, IHC

Recommended Dilutions: IHC: 100-300; ELISA: 5000-10000

Host Species: Rabbit

Clonality: Rabbit Polyclonal

Isotype: Immunogen-specific rabbit IgG

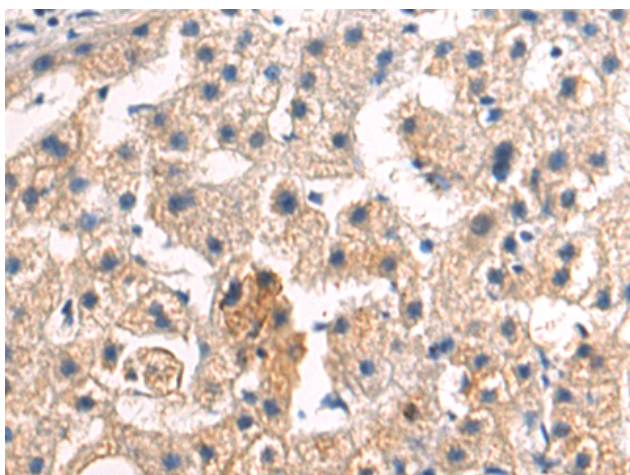
Purification: Antigen affinity purification

Species Reactivity: Human, Mouse

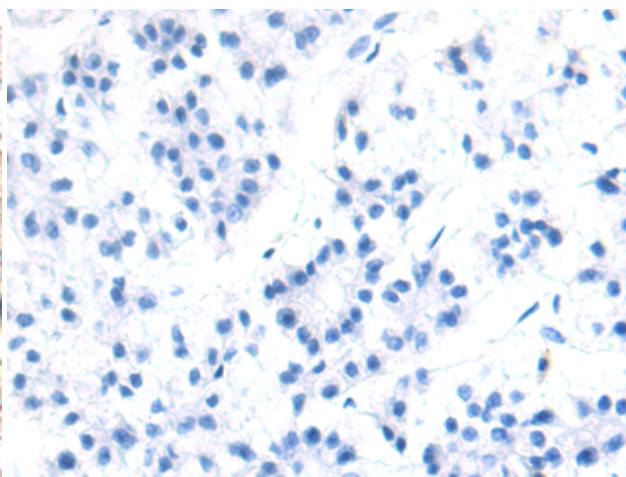
Constituents: PBS (without Mg²⁺ and Ca²⁺), pH 7.4, 150 mM NaCl, 0.05% Sodium Azide and 40% glycerol

Research Areas: Signal Transduction, Cardiovascular, Immunology, Stem Cells

Storage & Shipping: Store at -20°C. Avoid repeated freezing and thawing



Immunohistochemistry analysis of paraffin embedded Human liver cancer tissue using 216600(ITGA4 Antibody) at a dilution of 1/95(Cytoplasm and Cell membrane).



In comparison with the IHC on the left, the same paraffin-embedded Human liver cancer tissue is first treated with the fusion protein and then with 216600(Anti-ITGA4 Antibody) at dilution 1/95.