

ITGAV RABBIT PAB

Cat.#: S221700

Product Name: Anti-ITGAV Rabbit Polyclonal Antibody

Synonyms: CD51; MSK8; VNRA; VTNR

UNIPROT ID: P06756 (Gene Accession - NP_002201)

Background: The product of this gene belongs to the integrin alpha chain family. Integrins are heterodimeric integral membrane proteins composed of an alpha subunit and a beta subunit that function in cell surface adhesion and signaling. The encoded preproprotein is proteolytically processed to generate light and heavy chains that comprise the alpha V subunit. This subunit associates with beta 1, beta 3, beta 5, beta 6 and beta 8 subunits. The heterodimer consisting of alpha V and beta 3 subunits is also known as the vitronectin receptor. This integrin may regulate angiogenesis and cancer progression. Alternative splicing results in multiple transcript variants. Note that the integrin alpha 5 and integrin alpha V subunits are encoded by distinct genes.

Immunogen: Synthetic peptide of human ITGAV

Applications: ELISA, IHC

Recommended Dilutions: IHC: 25-50; ELISA: 5000-10000

Host Species: Rabbit

Clonality: Rabbit Polyclonal

Isotype: Immunogen-specific rabbit IgG

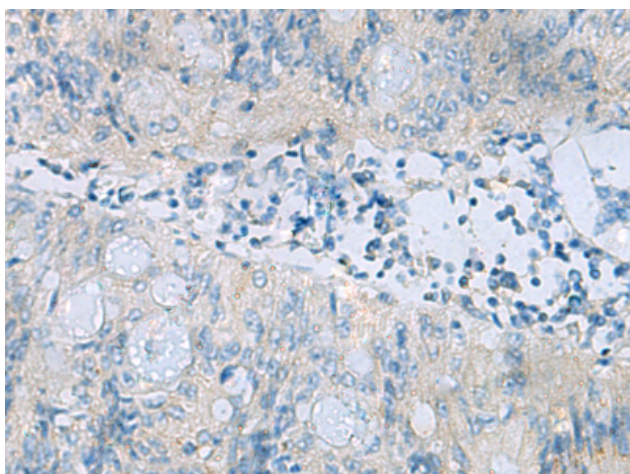
Purification: Antigen affinity purification

Species Reactivity: Human, Mouse

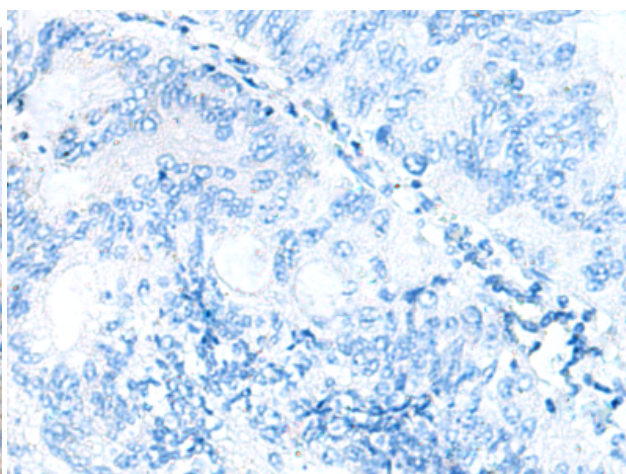
Constituents: PBS (without Mg²⁺ and Ca²⁺), pH 7.4, 150 mM NaCl, 0.05% Sodium Azide and 40% glycerol

Research Areas: Cardiovascular, Stem Cells

Storage & Shipping: Store at -20°C. Avoid repeated freezing and thawing



Immunohistochemistry analysis of paraffin embedded Human colorectal cancer tissue using 221700(ITGAV Antibody) at a dilution of 1/35(Cytoplasm and Cell membrane).



In comparison with the IHC on the left, the same paraffin-embedded Human colorectal cancer tissue is first treated with the synthetic peptide and then with 221700(Anti-ITGAV Antibody) at dilution 1/35.



Product Description

Pioneering GTPase and Oncogene Product Development since 2010
