

ITGB1 RABBIT PAB

Cat.#: S216588

Product Name: Anti-ITGB1 Rabbit Polyclonal Antibody

Synonyms: CD29; FNRB; MDF2; VLAB; GPIIA; MSK12; VLA-BETA

UNIPROT ID: P05556 (Gene Accession - BC020057)

Background: Integrins are heterodimeric proteins made up of alpha and beta subunits. At least 18 alpha and 8 beta subunits have been described in mammals. Integrin family members are membrane receptors involved in cell adhesion and recognition in a variety of processes including embryogenesis, hemostasis, tissue repair, immune response and metastatic diffusion of tumor cells. This gene encodes a beta subunit. Multiple alternatively spliced transcript variants which encode different protein isoforms have been found for this gene.

Immunogen: Fusion protein of human ITGB1

Applications: ELISA, WB, IHC

Recommended Dilutions: IHC: 50-200;WB: 500-2000;ELISA: 1000-5000

Host Species: Rabbit

Clonality: Rabbit Polyclonal

Isotype: Immunogen-specific rabbit IgG

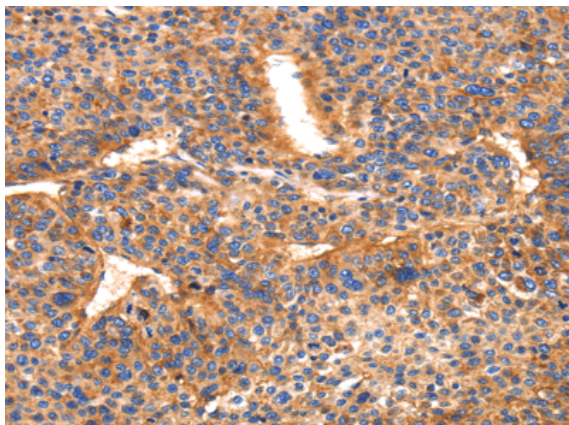
Purification: Antigen affinity purification

Species Reactivity: Human, Mouse, Rat

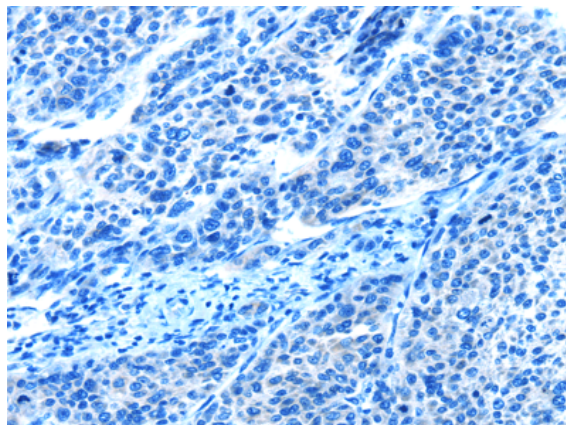
Constituents: PBS (without Mg²⁺ and Ca²⁺), pH 7.4, 150 mM NaCl, 0.05% Sodium Azide and 40% glycerol

Research Areas: Signal Transduction

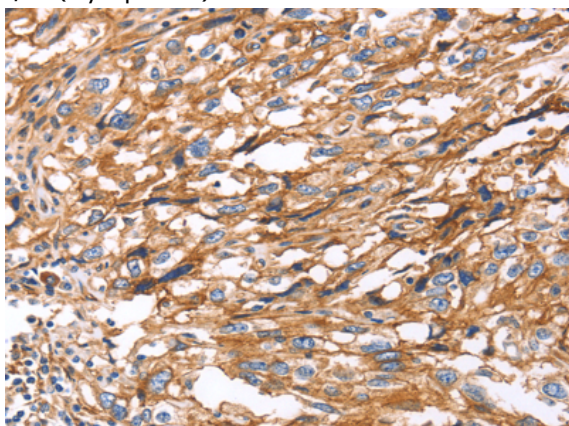
Storage & Shipping: Store at -20°C. Avoid repeated freezing and thawing



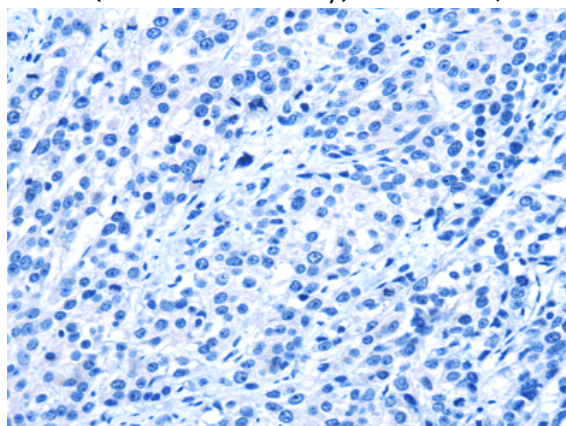
Immunohistochemistry analysis of paraffin embedded Human liver cancer tissue using 216588(ITGB1 Antibody) at a dilution of 1/50(Cytoplasm).



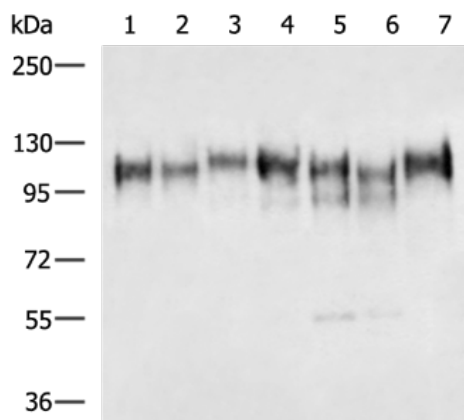
In comparison with the IHC on the left, the same paraffin-embedded Human liver cancer tissue is first treated with the fusion protein and then with 216588(Anti-ITGB1 Antibody) at dilution 1/50.



The image on the left is immunohistochemistry of paraffin-embedded Human esophagus cancer tissue using 216588(Anti-ITGB1 Antibody) at a dilution of 1/50.



In comparison with the IHC on the left, the same paraffin-embedded Human esophagus cancer tissue is first treated with fusion protein and then with D220869(Anti-ITGB1 Antibody) at dilution 1/50.



Gel: 6%SDS-PAGE, Lysate: 40 μ g;
 Lane 1-7: Human stomach tissue, Human gastric carcinoma tissue, 823 cell, Human leiomyosarcoma tissue, A172 cell, HUVEC cell, Human gastric carcinoma and surrounding tissue lysates;
 Primary antibody: 216588(ITGB1 Antibody) at dilution 1/100;
 Secondary antibody: HRP-conjugated Goat anti rabbit IgG at 1/5000 dilution;
 Exposure time: 5 seconds



Product Description

Pioneering GTPase and Oncogene Product Development since 2010
