

ITGB3 RABBIT PAB

Cat.#: S216586

Product Name: Anti-ITGB3 Rabbit Polyclonal Antibody

Synonyms: GT; CD61; GP3A; BDPLT2; GPIIIa; BDPLT16

UNIPROT ID: P05106 (Gene Accession - BC127666)

Background: The ITGB3 protein product is the integrin beta chain beta 3. Integrins are integral cell-surface proteins composed of an alpha chain and a beta chain. A given chain may combine with multiple partners resulting in different integrins. Integrin beta 3 is found along with the alpha IIb chain in platelets. Integrins are known to participate in cell adhesion as well as cell-surface mediated signalling.

Immunogen: Fusion protein of human ITGB3

Applications: ELISA, WB, IHC

Recommended Dilutions: IHC: 100-300;WB: 500-2000;ELISA: 5000-10000

Host Species: Rabbit

Clonality: Rabbit Polyclonal

Isotype: Immunogen-specific rabbit IgG

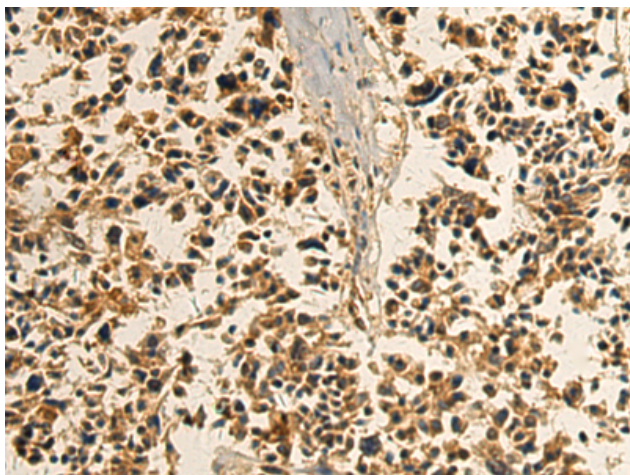
Purification: Antigen affinity purification

Species Reactivity: Human, Mouse, Rat

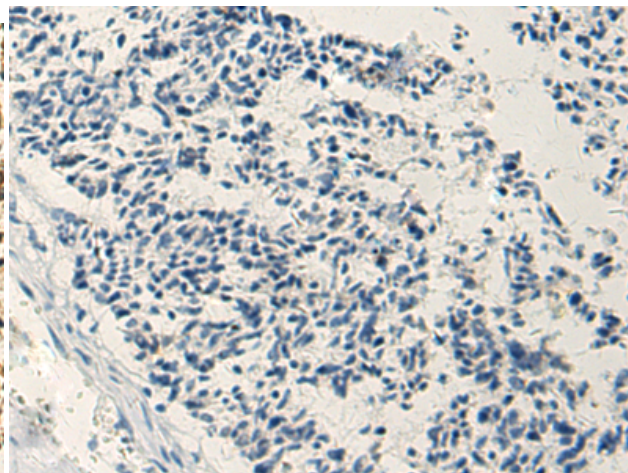
Constituents: PBS (without Mg²⁺ and Ca²⁺), pH 7.4, 150 mM NaCl, 0.05% Sodium Azide and 40% glycerol

Research Areas: Signal Transduction, Cardiovascular

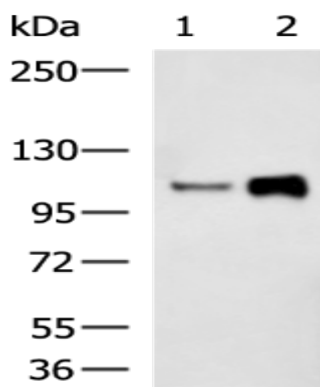
Storage & Shipping: Store at -20°C. Avoid repeated freezing and thawing



Immunohistochemistry analysis of paraffin embedded Human ovarian cancer tissue using 216586(ITGB3 Antibody) at a dilution of 1/110(Cytoplasm).



In comparison with the IHC on the left, the same paraffin-embedded Human ovarian cancer tissue is first treated with the fusion protein and then with 216586(Anti-ITGB3 Antibody) at dilution 1/110.



Gel: 6%SDS-PAGE, Lysate: 40 µg;

Lane 1-2: HUVEC cell, Human placenta tissue lysates;

Primary antibody: 216586(ITGB3 Antibody) at dilution 1/500;

Secondary antibody: HRP-conjugated Goat anti rabbit IgG at 1/5000 dilution;

Exposure time: 40 seconds