

ITGB6 RABBIT PAB

Cat.#: S216587

Product Name: Anti-ITGB6 Rabbit Polyclonal Antibody

Synonyms: AI1H

UNIPROT ID: P18564 (Gene Accession - BC121178)

Background: This gene encodes a protein that is a member of the integrin superfamily. Members of this family are adhesion receptors that function in signaling from the extracellular matrix to the cell. Integrins are heterodimeric integral membrane proteins composed of an alpha chain and a beta chain. The encoded protein forms a dimer with an alpha v chain and this heterodimer can bind to ligands like fibronectin and transforming growth factor beta 1. Alternate splicing results in multiple transcript variants.

Immunogen: Fusion protein of human ITGB6

Applications: ELISA, IHC

Recommended Dilutions: IHC: 50-200; ELISA: 5000-10000

Host Species: Rabbit

Clonality: Rabbit Polyclonal

Isotype: Immunogen-specific rabbit IgG

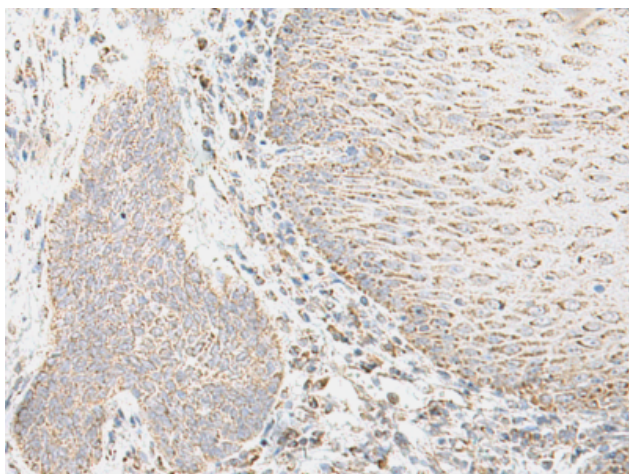
Purification: Antigen affinity purification

Species Reactivity: Human, Mouse, Rat

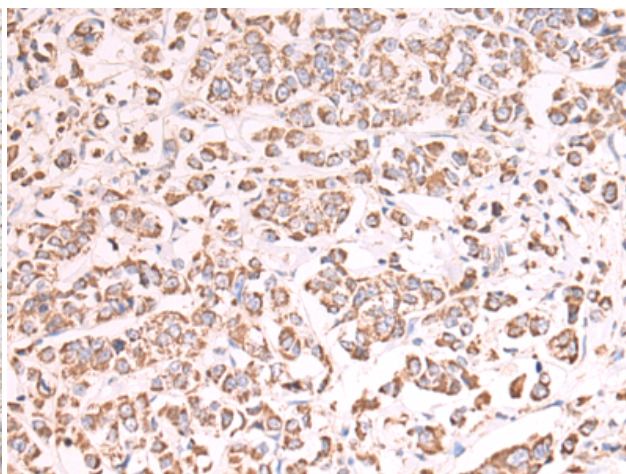
Constituents: PBS (without Mg²⁺ and Ca²⁺), pH 7.4, 150 mM NaCl, 0.05% Sodium Azide and 40% glycerol

Research Areas: Signal Transduction

Storage & Shipping: Store at -20°C. Avoid repeated freezing and thawing



Immunohistochemistry analysis of paraffin-embedded Human liver cancer tissue using 216587(ITGB6 Antibody) at a dilution of 1/55(Cytoplasm).



Immunohistochemistry analysis of paraffin-embedded Human breast cancer tissue using 216587(Anti-ITGB6 Antibody) at a dilution of 1/55.