

## ITLN2 RABBIT PAB

**Cat.#:** S218109

**Product Name:** Anti-ITLN2 Rabbit Polyclonal Antibody

**Synonyms:** HL2; HL-2

**UNIPROT ID:** Q8WWU7 (Gene Accession - BC117225 )

**Background:** Predicted to enable oligosaccharide binding activity. Predicted to be active in extracellular space.

**Immunogen:** Fusion protein of human ITLN2

**Applications:** ELISA, WB, IHC

**Recommended Dilutions:** IHC: 150-300;WB: 500-2000;ELISA: 5000-10000

**Host Species:** Rabbit

**Clonality:** Rabbit Polyclonal

**Isotype:** Immunogen-specific rabbit IgG

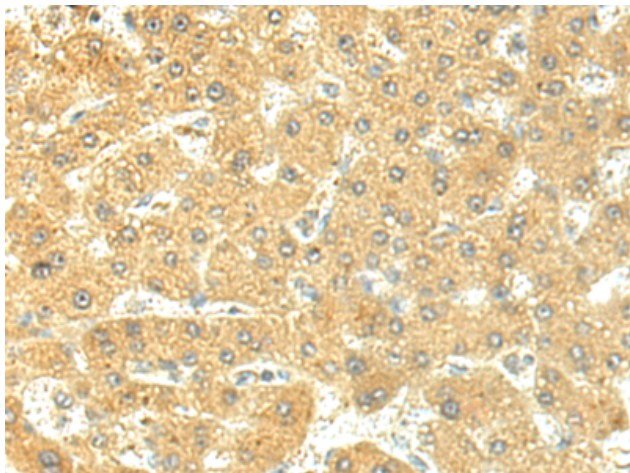
**Purification:** Antigen affinity purification

**Species Reactivity:** Human, Mouse

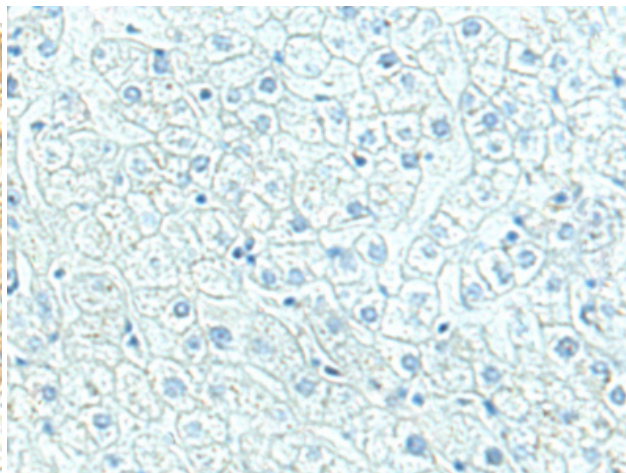
**Constituents:** PBS (without Mg<sup>2+</sup> and Ca<sup>2+</sup>), pH 7.4, 150 mM NaCl, 0.05% Sodium Azide and 40% glycerol

**Research Areas:** Metabolism, Cardiovascular

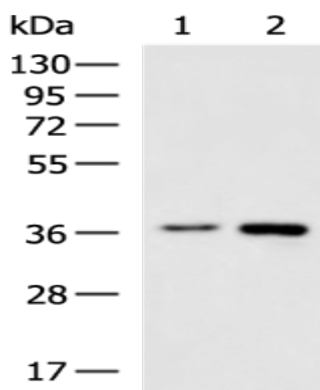
**Storage & Shipping:** Store at -20°C. Avoid repeated freezing and thawing



Immunohistochemistry analysis of paraffin embedded Human liver cancer tissue using 218109(ITLN2 Antibody) at a dilution of 1/120(Secreted).



In comparison with the IHC on the left, the same paraffin-embedded Human liver cancer tissue is first treated with the fusion protein and then with 218109(Anti-ITLN2 Antibody) at dilution 1/120.



Gel: 8%SDS-PAGE, Lysate: 40 µg;  
 Lane 1-2: Human rectum tissue, Human ileum tissue lysates;  
 Primary antibody: 218109(ITLN2 Antibody) at dilution 1/550;  
 Secondary antibody: HRP-conjugated Goat anti rabbit IgG at 1/5000 dilution;  
 Exposure time: 1 minute