

ITM2C RABBIT PAB

Cat.#: S219274

Product Name: Anti-ITM2C Rabbit Polyclonal Antibody

Synonyms: E25; BRI3; E25C; ITM3; BRICD2C

UNIPROT ID: Q9NQX7 (Gene Accession - BC025742)

Background: Negative regulator of amyloid-beta peptide production. May inhibit the processing of APP by blocking its access to alpha- and beta-secretase. Binding to the beta-secretase-cleaved APP C-terminal fragment is negligible, suggesting that ITM2C is a poor gamma-secretase cleavage inhibitor. May play a role in TNF-induced cell death and neuronal differentiation (By similarity).

Immunogen: Fusion protein of human ITM2C

Applications: ELISA, IHC

Recommended Dilutions: IHC: 100-200; ELISA: 5000-10000

Host Species: Rabbit

Clonality: Rabbit Polyclonal

Isotype: Immunogen-specific rabbit IgG

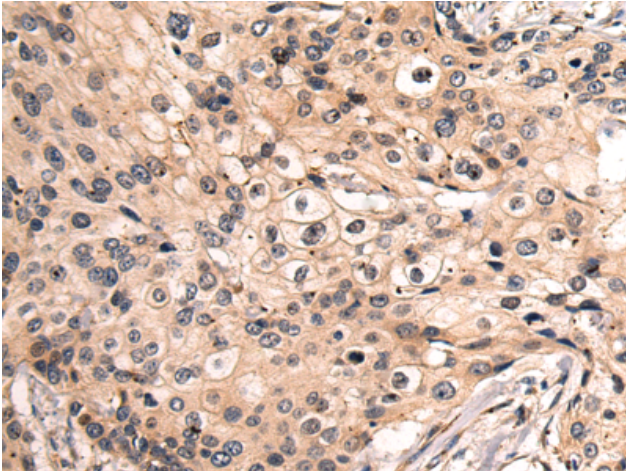
Purification: Antigen affinity purification

Species Reactivity: Human

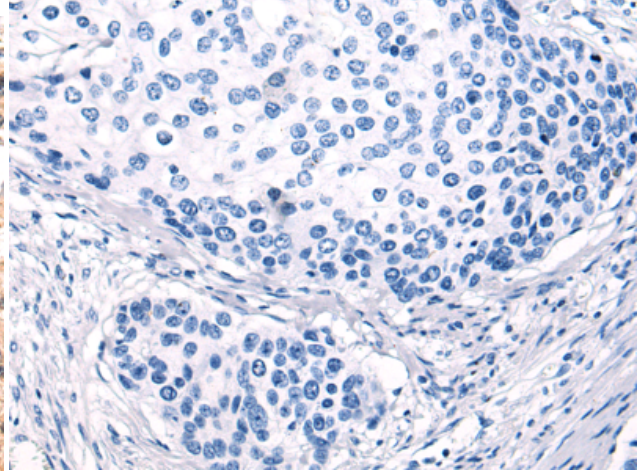
Constituents: PBS (without Mg²⁺ and Ca²⁺), pH 7.4, 150 mM NaCl, 0.05% Sodium Azide and 40% glycerol

Research Areas: Neuroscience

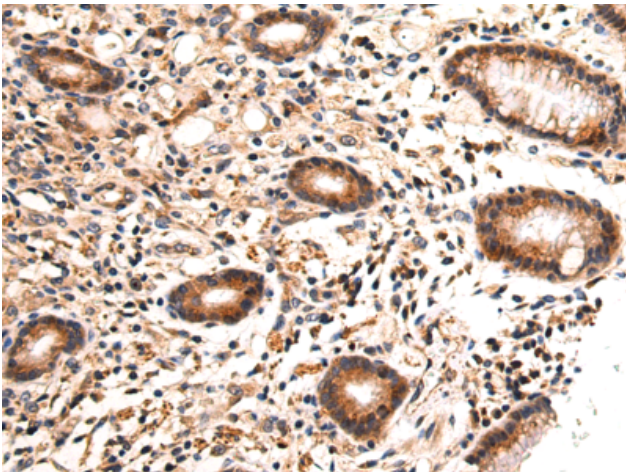
Storage & Shipping: Store at -20°C. Avoid repeated freezing and thawing



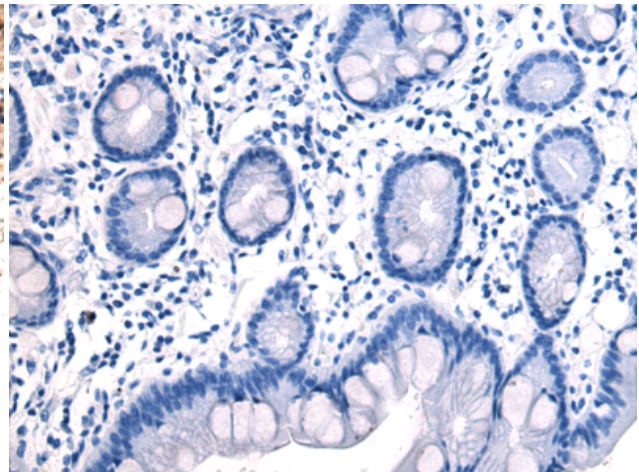
Immunohistochemistry analysis of paraffin embedded Human cervical cancer tissue using 219274 (ITM2C Antibody) at a dilution of 1/120 (Lysosome).



In comparison with the IHC on the left, the same paraffin-embedded Human cervical cancer tissue is first treated with the fusion protein and then with 219274 (Anti-ITM2C Antibody) at dilution 1/120.



The image on the left is immunohistochemistry of paraffin-embedded Human gastric cancer tissue using 219274 (Anti-ITM2C Antibody) at a dilution of 1/120.



In comparison with the IHC on the left, the same paraffin-embedded Human gastric cancer tissue is first treated with fusion protein and then with D226178 (Anti-ITM2C Antibody) at dilution 1/120.