

## ITPA RABBIT MAB

**Cat.#:** N262410

**Product Name:** Anti-ITPA Rabbit Monoclonal Antibody

**Synonyms:** My049; ITPase; NTPase; C20orf37; dJ794I6.3; HLC14-06-P

**UNIPROT ID:** Q9BY32

**Background:** Pyrophosphatase that hydrolyzes the non-canonical purine nucleotides inosine triphosphate (ITP), deoxyinosine triphosphate (dITP) as well as 2'-deoxy-N-6-hydroxylaminopurine triphosphate (dHATP) and xanthosine 5'-triphosphate (XTP) to their respective monophosphate derivatives. The enzyme does not distinguish between the deoxy- and ribose forms. Probably excludes non-canonical purines from RNA and DNA precursor pools, thus preventing their incorporation into RNA and DNA and avoiding chromosomal lesions.

**Immunogen:** A synthetic peptide of human Inosine triphosphate pyrophosphatase

**Applications:** WB,IHC-P

**Recommended Dilutions:** WB: 1/500-1/1000 IHC: 1/50-1/100

**Host Species:** Rabbit

**Clonality:** Rabbit Monoclonal

**Clone ID:** R01-4D4

**MW:** Calculated MW: 21 kDa; Observed MW: 21 kDa

**Isotype:** IgG

**Purification:** Affinity Purified

**Species Reactivity:** Human

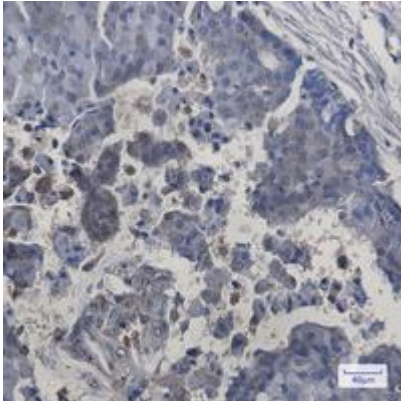
**Conjugation:** Unconjugated

**Modification:** Unmodified

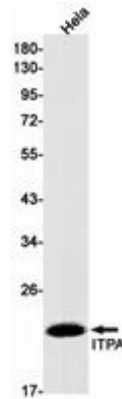
**Constituents:** PBS (without Mg<sup>2+</sup> and Ca<sup>2+</sup>), pH 7.3 containing 50% glycerol, 0.5% BSA and 0.02% sodium azide

**Research Areas:** -

**Storage & Shipping:** Store at -20°C. Avoid repeated freezing and thawing



Immunohistochemistry analysis of paraffin-embedded Human breast cancer using Inosine triphosphate pyrophosphatase antibody. High-pressure and temperature Sodium Citrate pH 6.0 was used for antigen retrieval.



Western blot analysis of ITPA in HeLa lysates using ITPA antibody.