

ITPKC RABBIT PAB

Cat.#: S222240

Product Name: Anti-ITPKC Rabbit Polyclonal Antibody

Synonyms: IP3KC; IP3-3KC

UNIPROT ID: Q96DU7 (Gene Accession - NP_079470)

Background: This gene encodes a member of the inositol 1,4,5-trisphosphate [Ins(1,4,5)P(3)] 3-kinase family of enzymes that catalyze the phosphorylation of inositol 1,4,5-trisphosphate to 1,3,4,5-tetrakisphosphate. The encoded protein is localized to the nucleus and cytoplasm and has both nuclear import and nuclear export activity. Single nucleotide polymorphisms in this gene are associated with Kawasaki disease.

Immunogen: Synthetic peptide of human ITPKC

Applications: ELISA, IHC

Recommended Dilutions: IHC: 30-150; ELISA: 5000-10000

Host Species: Rabbit

Clonality: Rabbit Polyclonal

Isotype: Immunogen-specific rabbit IgG

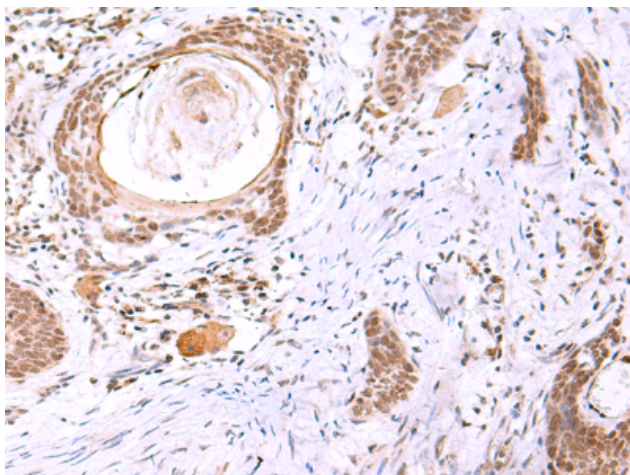
Purification: Antigen affinity purification

Species Reactivity: Human

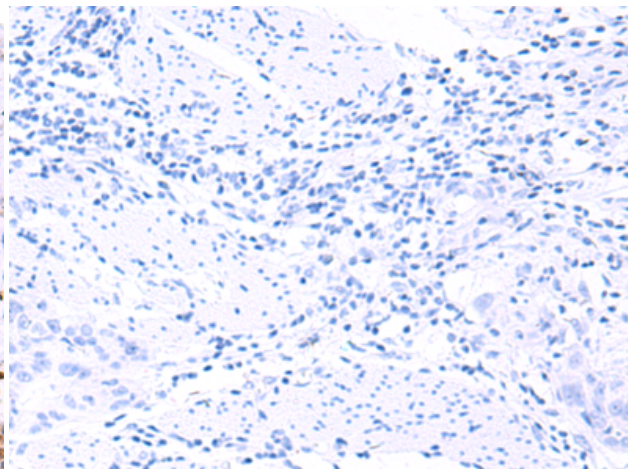
Constituents: PBS (without Mg²⁺ and Ca²⁺), pH 7.4, 150 mM NaCl, 0.05% Sodium Azide and 40% glycerol

Research Areas: Signal Transduction

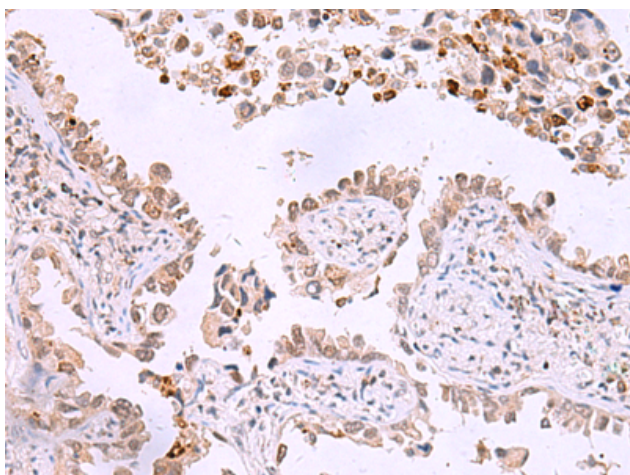
Storage & Shipping: Store at -20°C. Avoid repeated freezing and thawing



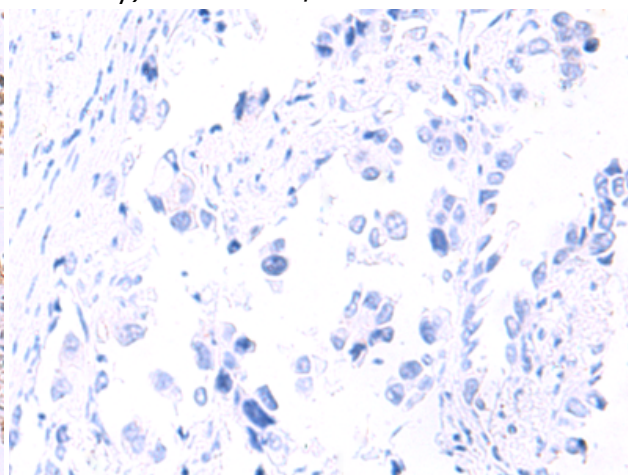
Immunohistochemistry analysis of paraffin embedded Human esophagus cancer tissue using 222240 (ITPKC Antibody) at a dilution of 1/30 (Nucleus).



In comparison with the IHC on the left, the same paraffin-embedded Human esophagus cancer tissue is first treated with the synthetic peptide and then with 222240 (Anti-ITPKC Antibody) at dilution 1/30.



The image on the left is immunohistochemistry of paraffin-embedded Human lung cancer tissue using 222240 (Anti-ITPKC Antibody) at a dilution of 1/30.



In comparison with the IHC on the left, the same paraffin-embedded Human lung cancer tissue is first treated with synthetic peptide and then with D264267 (Anti-ITPKC Antibody) at dilution 1/30.