

## JPT2 RABBIT PAB

**Cat.#:** S218824

**Product Name:** Anti-JPT2 Rabbit Polyclonal Antibody

**Synonyms:** L11; HN1L; C16orf34

**UNIPROT ID:** Q9H910 (Gene Accession - BC014438 )

**Background:** The function of this protein remains unknown.

**Immunogen:** Fusion protein of human JPT2

**Applications:** ELISA, IHC

**Recommended Dilutions:** IHC: 50–300; ELISA: 5000–10000

**Host Species:** Rabbit

**Clonality:** Rabbit Polyclonal

**Isotype:** Immunogen-specific rabbit IgG

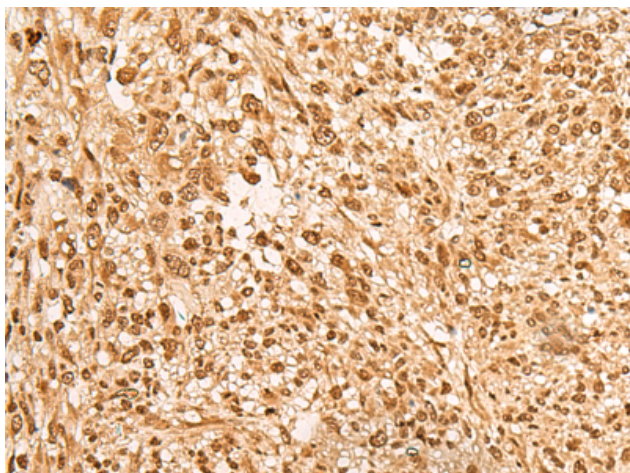
**Purification:** Antigen affinity purification

**Species Reactivity:** Human

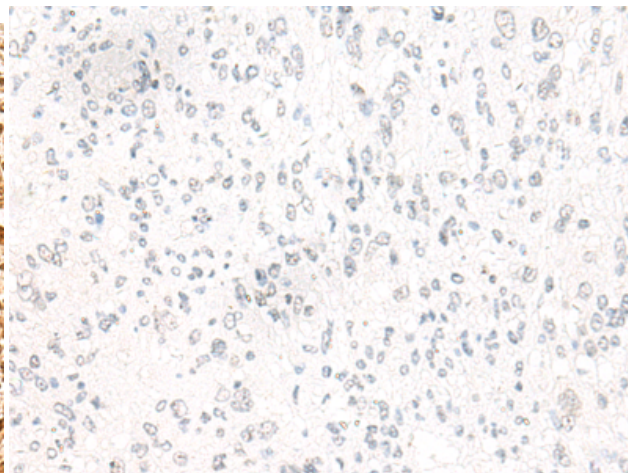
**Constituents:** PBS (without Mg<sup>2+</sup> and Ca<sup>2+</sup>), pH 7.4, 150 mM NaCl, 0.05% Sodium Azide and 40% glycerol

**Research Areas:** Cell Biology

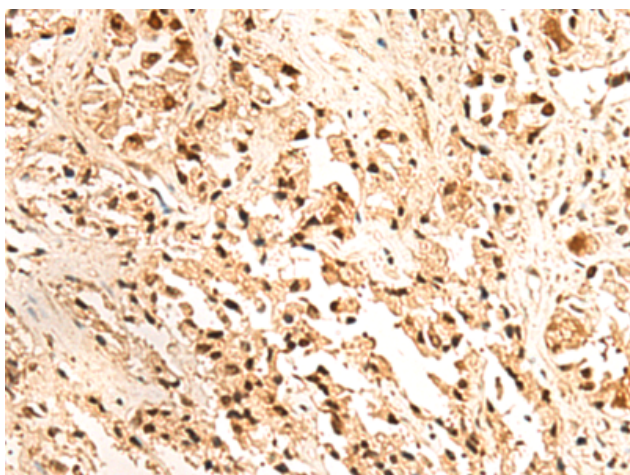
**Storage & Shipping:** Store at –20°C. Avoid repeated freezing and thawing



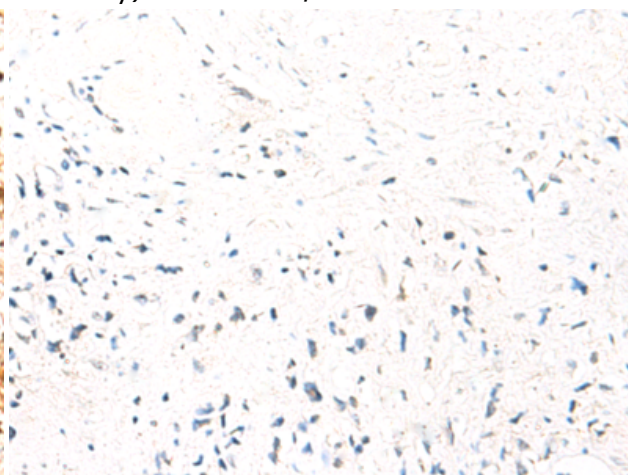
Immunohistochemistry analysis of paraffin embedded Human liver cancer tissue using 218824(JPT2 Antibody) at a dilution of 1/65(Cytoplasm and Nucleus).



In comparison with the IHC on the left, the same paraffin-embedded Human liver cancer tissue is first treated with the fusion protein and then with 218824(Anti-JPT2 Antibody) at dilution 1/65.



The image on the left is immunohistochemistry of paraffin-embedded Human prostate cancer tissue using 218824(Anti-JPT2 Antibody) at a dilution of 1/65.



In comparison with the IHC on the left, the same paraffin-embedded Human prostate cancer tissue is first treated with fusion protein and then with D225294(Anti-JPT2 Antibody) at dilution 1/65.