

KANSL1L RABBIT PAB

Cat.#: S219177

Product Name: Anti-KANSL1L Rabbit Polyclonal Antibody

Synonyms: MSL1v2; C2orf67

UNIPROT ID: A0AUZ9 (Gene Accession - BC032837)

Background: The function of this protein remains unknown.

Immunogen: Fusion protein of human KANSL1L

Applications: ELISA, IHC

Recommended Dilutions: IHC: 100-300; ELISA: 5000-10000

Host Species: Rabbit

Clonality: Rabbit Polyclonal

Isotype: Immunogen-specific rabbit IgG

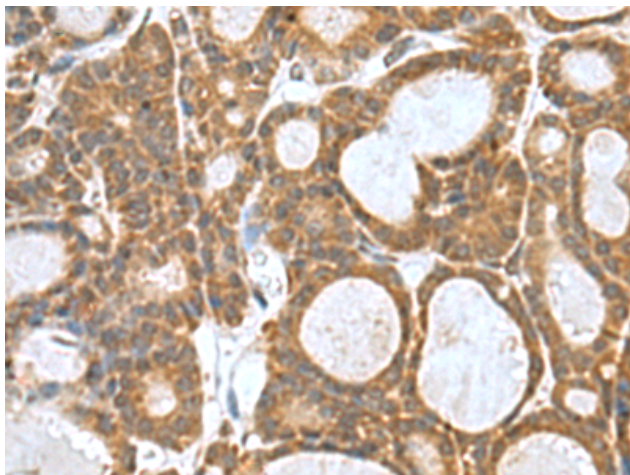
Purification: Antigen affinity purification

Species Reactivity: Human, Mouse

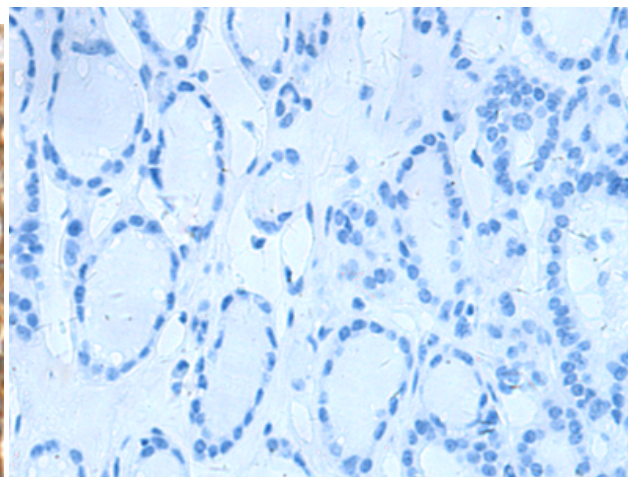
Constituents: PBS (without Mg²⁺ and Ca²⁺), pH 7.4, 150 mM NaCl, 0.05% Sodium Azide and 40% glycerol

Research Areas: Epigenetics and Nuclear Signaling

Storage & Shipping: Store at -20°C. Avoid repeated freezing and thawing



Immunohistochemistry analysis of paraffin embedded Human thyroid cancer tissue using 219177 (KANSL1L Antibody) at a dilution of 1/80 (Cytoplasm).



In comparison with the IHC on the left, the same paraffin-embedded Human thyroid cancer tissue is first treated with the fusion protein and then with 219177 (Anti-KANSL1L Antibody) at dilution 1/80.