

KAT13A RABBIT MAB

Cat.#: N261624

Product Name: Anti-KAT13A Rabbit Monoclonal Antibody

Synonyms: bHLHe74; mNRC 1; NCoA 1; RIP160; SRC 1

UNIPROT ID: Q15788

Background: Nuclear receptor coactivator that directly binds nuclear receptors and stimulates the transcriptional activities in a hormone-dependent fashion. Involved in the coactivation of different nuclear receptors, such as for steroids (PGR, GR and ER), retinoids (RXRs), thyroid hormone (TRs) and prostanoids (PPARs).

Immunogen: Recombinant protein of human SRC1

Applications: WB,IHC-P,IP

Recommended Dilutions: WB: 1/500-1/1000 IHC: 1/50-1/100 IP: 1/20

Host Species: Rabbit

Clonality: Rabbit Monoclonal

Clone ID: R07-5B7

MW: Calculated MW: 157 kDa; Observed MW: 157 kDa

Isotype: IgG

Purification: Affinity Purified

Species Reactivity: Human

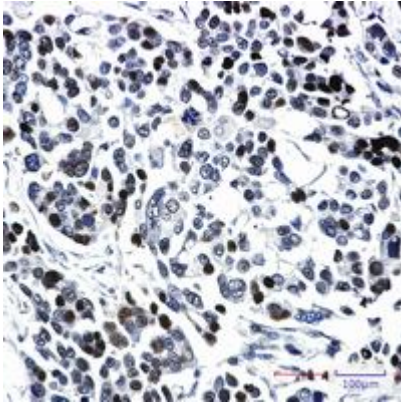
Conjugation: Unconjugated

Modification: Unmodified

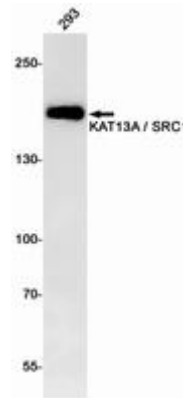
Constituents: PBS (without Mg²⁺ and Ca²⁺), pH 7.3 containing 50% glycerol, 0.5% BSA and 0.02% sodium azide

Research Areas: EpigeneticsyyyHistone Acetylation

Storage & Shipping: Store at -20°C. Avoid repeated freezing and thawing



Immunohistochemistry analysis of paraffin-embedded Human Cholangiocarcinoma using SRC1 antibody. High-pressure and temperature Sodium Citrate pH 6.0 was used for antigen retrieval.



Western blot analysis of KAT13A / SRC1 in 293 lysates using KAT13A antibody.