

## KAT14 RABBIT PAB

**Cat.#:** S218763

**Product Name:** Anti-KAT14 Rabbit Polyclonal Antibody

**Synonyms:** ATAC2; CRP2BP; CSRP2BP; PRO1194; dJ717M23.1

**UNIPROT ID:** Q9H8E8 (Gene Accession - BC009174 )

**Background:** CSRP2 is a protein containing two LIM domains, which are double zinc finger motifs found in proteins of diverse function. CSRP2 and some related proteins are thought to act as protein adapters, bridging two or more proteins to form a larger protein complex. The protein encoded by this gene binds to one of the LIM domains of CSRP2 and contains an acetyltransferase domain. Although the encoded protein has been detected in the cytoplasm, it is predominantly a nuclear protein. Alternatively spliced transcript variants have been described.

**Immunogen:** Fusion protein of human KAT14

**Applications:** ELISA, WB, IHC

**Recommended Dilutions:** IHC: 30-150;WB: 500-2000;ELISA: 5000-10000

**Host Species:** Rabbit

**Clonality:** Rabbit Polyclonal

**Isotype:** Immunogen-specific rabbit IgG

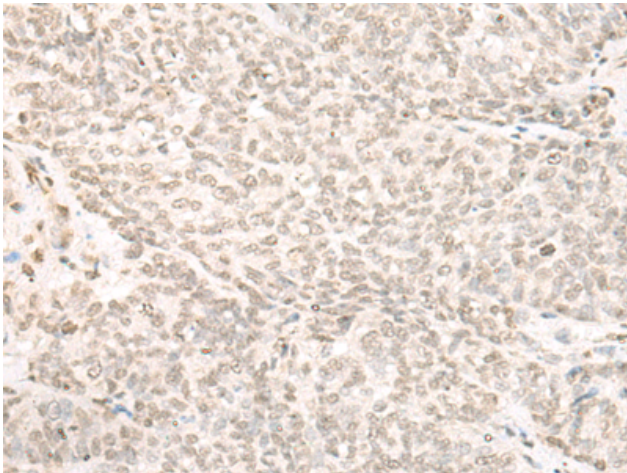
**Purification:** Antigen affinity purification

**Species Reactivity:** Human, Mouse

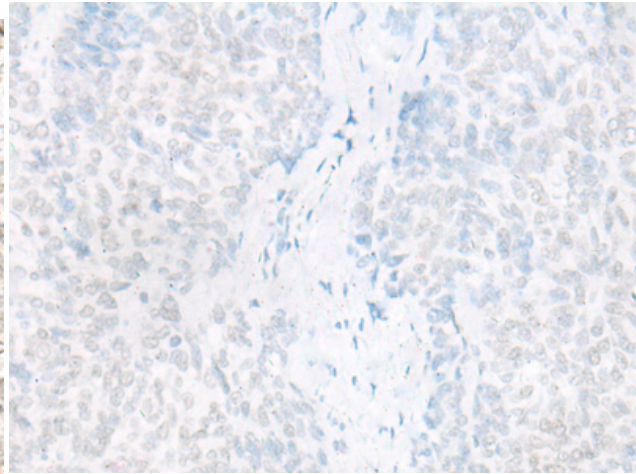
**Constituents:** PBS (without Mg<sup>2+</sup> and Ca<sup>2+</sup>), pH 7.4, 150 mM NaCl, 0.05% Sodium Azide and 40% glycerol

**Research Areas:** Epigenetics and Nuclear Signaling

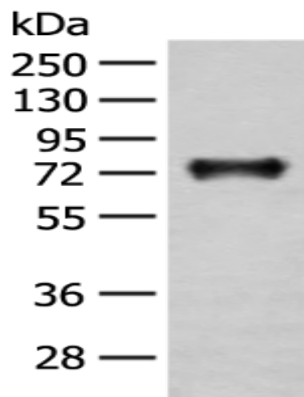
**Storage & Shipping:** Store at -20°C. Avoid repeated freezing and thawing



Immunohistochemistry analysis of paraffin embedded Human ovarian cancer tissue using 218763(KAT14 Antibody) at a dilution of 1/20(Nucleus).



In comparison with the IHC on the left, the same paraffin-embedded Human ovarian cancer tissue is first treated with the fusion protein and then with 218763(Anti-KAT14 Antibody) at dilution 1/20.



Gel: 8%SDS-PAGE, Lysate: 40  $\mu$ g;  
Lane: Mouse brain tissue lysate;  
Primary antibody: 218763(KAT14 Antibody) at dilution 1/300;  
Secondary antibody: Goat anti rabbit IgG at 1/8000 dilution;  
Exposure time: 3 minutes