

## KBTBD11 RABBIT PAB

**Cat.#:** S222276

**Product Name:** Anti-KBTBD11 Rabbit Polyclonal Antibody

**Synonyms:** KLHDC7C

**UNIPROT ID:** O94819 (Gene Accession - NP\_055682 )

**Background:** The function of this protein remains unknown.

**Immunogen:** Synthetic peptide of human KBTBD11

**Applications:** ELISA, IHC

**Recommended Dilutions:** IHC: 30-150; ELISA: 5000-10000

**Host Species:** Rabbit

**Clonality:** Rabbit Polyclonal

**Isotype:** Immunogen-specific rabbit IgG

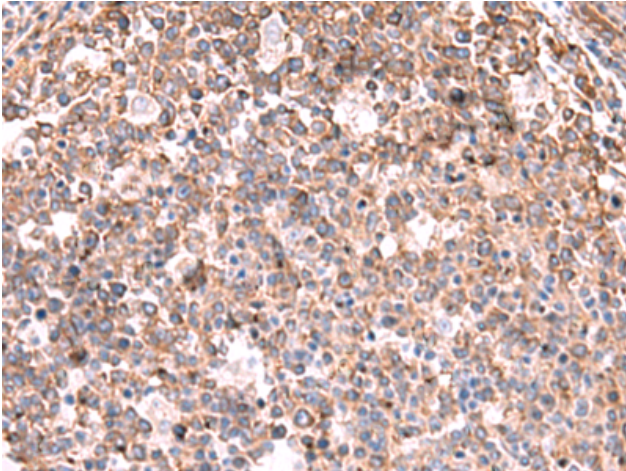
**Purification:** Antigen affinity purification

**Species Reactivity:** Human, Mouse

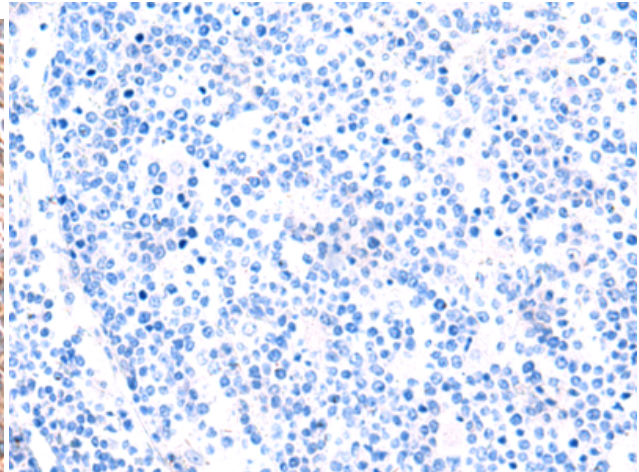
**Constituents:** PBS (without Mg<sup>2+</sup> and Ca<sup>2+</sup>), pH 7.4, 150 mM NaCl, 0.05% Sodium Azide and 40% glycerol

**Research Areas:** Cell Biology

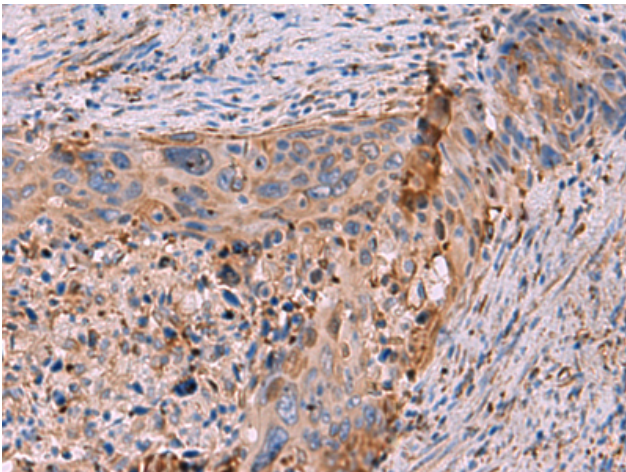
**Storage & Shipping:** Store at -20°C. Avoid repeated freezing and thawing



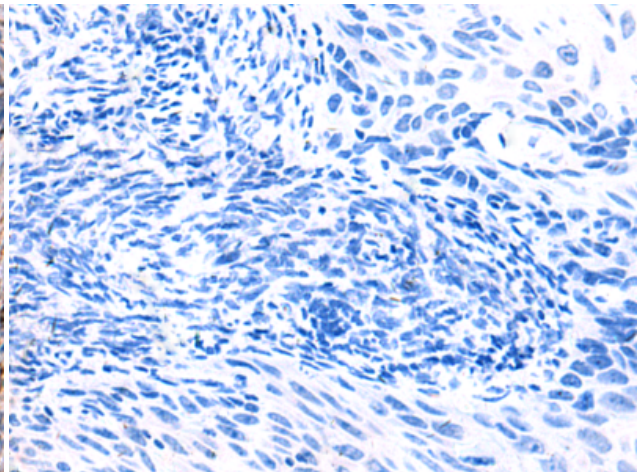
Immunohistochemistry analysis of paraffin embedded Human tonsil tissue using 222276(KBTBD11 Antibody) at a dilution of 1/35(Cytoplasm).



In comparison with the IHC on the left, the same paraffin-embedded Human tonsil tissue is first treated with the synthetic peptide and then with 222276(Anti-KBTBD11 Antibody) at dilution 1/35.



The image on the left is immunohistochemistry of paraffin-embedded Human cervical cancer tissue using 222276(Anti-KBTBD11 Antibody) at a dilution of 1/35.



In comparison with the IHC on the left, the same paraffin-embedded Human cervical cancer tissue is first treated with synthetic peptide and then with D264320(Anti-KBTBD11 Antibody) at dilution 1/35.