

KCNC2 RABBIT PAB

Cat.#: S219878

Product Name: Anti-KCNC2 Rabbit Polyclonal Antibody

Synonyms: KV3.2

UNIPROT ID: Q96PR1 (Gene Accession - NP_631875)

Background: The Shaker gene family of Drosophila encodes components of voltage-gated potassium channels and is comprised of four subfamilies. Based on sequence similarity, this gene is similar to one of these subfamilies, namely the Shaw subfamily. The protein encoded by this gene belongs to the delayed rectifier class of channel proteins and is an integral membrane protein that mediates the voltage-dependent potassium ion permeability of excitable membranes. Several transcript variants encoding different isoforms have been found for this gene.

Immunogen: Synthetic peptide of human KCNC2

Applications: ELISA, IHC

Recommended Dilutions: IHC: 150-500; ELISA: 1000-2000

Host Species: Rabbit

Clonality: Rabbit Polyclonal

Isotype: Immunogen-specific rabbit IgG

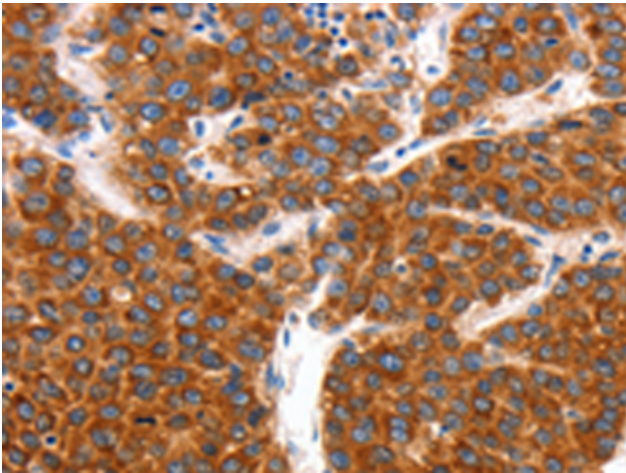
Purification: Antigen affinity purification

Species Reactivity: Human, Mouse, Rat

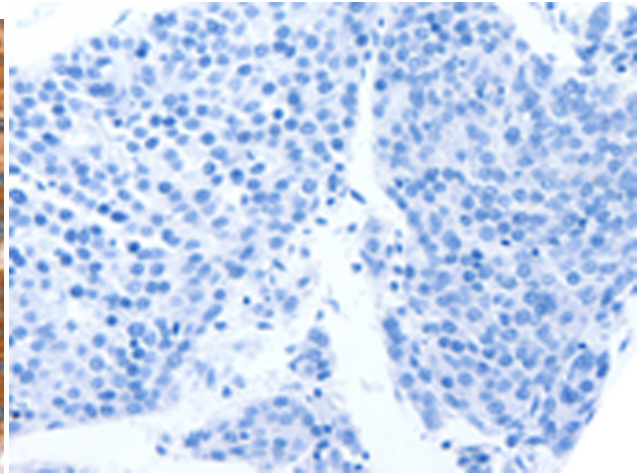
Constituents: PBS (without Mg²⁺ and Ca²⁺), pH 7.4, 150 mM NaCl, 0.05% Sodium Azide and 40% glycerol

Research Areas: Neuroscience

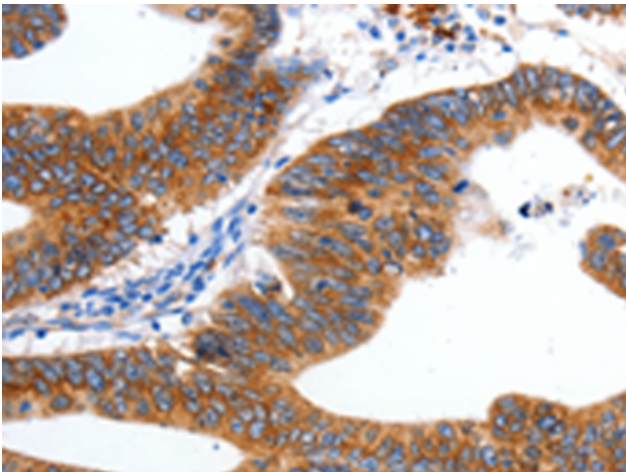
Storage & Shipping: Store at -20°C. Avoid repeated freezing and thawing



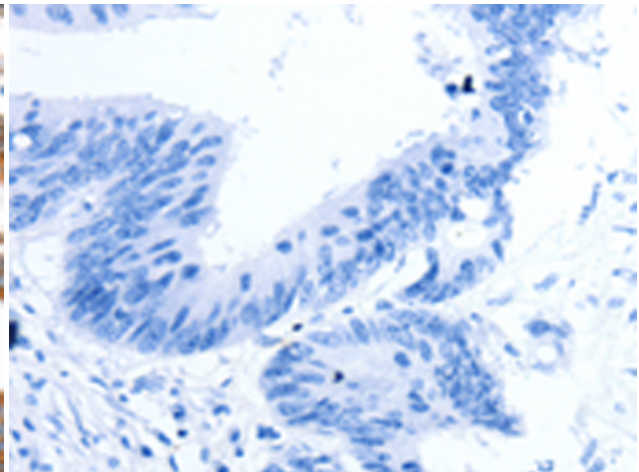
Immunohistochemistry analysis of paraffin embedded Human liver cancer tissue using 219878(KCNC2 Antibody) at a dilution of 1/100(Cytoplasm).



In comparison with the IHC on the left, the same paraffin-embedded Human liver cancer tissue is first treated with the synthetic peptide and then with 219878(Anti-KCNC2 Antibody) at dilution 1/100.



The image on the left is immunohistochemistry of paraffin-embedded Human colon cancer tissue using 219878(Anti-KCNC2 Antibody) at a dilution of 1/100.



In comparison with the IHC on the left, the same paraffin-embedded Human colon cancer tissue is first treated with synthetic peptide and then with D260538(Anti-KCNC2 Antibody) at dilution 1/100.