

KCNQ4 RABBIT PAB

Cat.#: S220654

Product Name: Anti-KCNQ4 Rabbit Polyclonal Antibody

Synonyms: DFNA2; KV7.4; DFNA2A

UNIPROT ID: P56696 (Gene Accession - NP_004691)

Background: The protein encoded by this gene forms a potassium channel that is thought to play a critical role in the regulation of neuronal excitability, particularly in sensory cells of the cochlea. The current generated by this channel is inhibited by M1 muscarinic acetylcholine receptors and activated by retigabine, a novel anti-convulsant drug. The encoded protein can form a homomultimeric potassium channel or possibly a heteromultimeric channel in association with the protein encoded by the KCNQ3 gene. Defects in this gene are a cause of nonsyndromic sensorineural deafness type 2 (DFNA2), an autosomal dominant form of progressive hearing loss. Two transcript variants encoding different isoforms have been found for this gene.

Immunogen: Synthetic peptide of human KCNQ4

Applications: ELISA, WB, IHC

Recommended Dilutions: IHC: 50-200;WB: 200-1000;ELISA: 1000-2000

Host Species: Rabbit

Clonality: Rabbit Polyclonal

Isotype: Immunogen-specific rabbit IgG

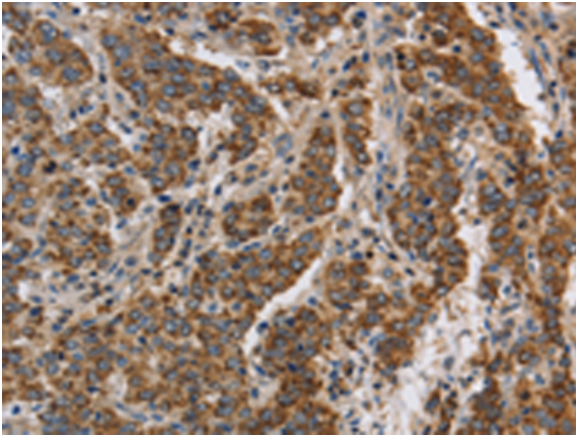
Purification: Antigen affinity purification

Species Reactivity: Human, Mouse

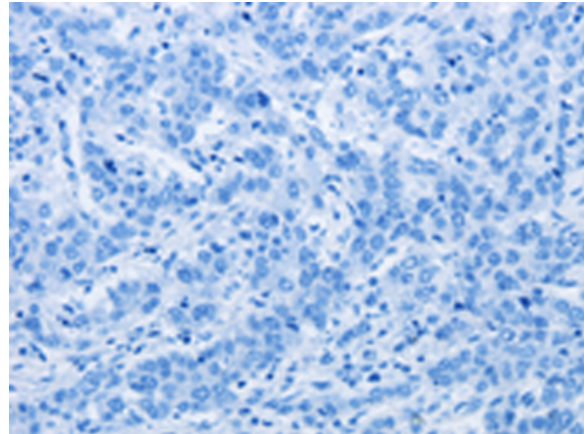
Constituents: PBS (without Mg²⁺ and Ca²⁺), pH 7.4, 150 mM NaCl, 0.05% Sodium Azide and 40% glycerol

Research Areas: Neuroscience

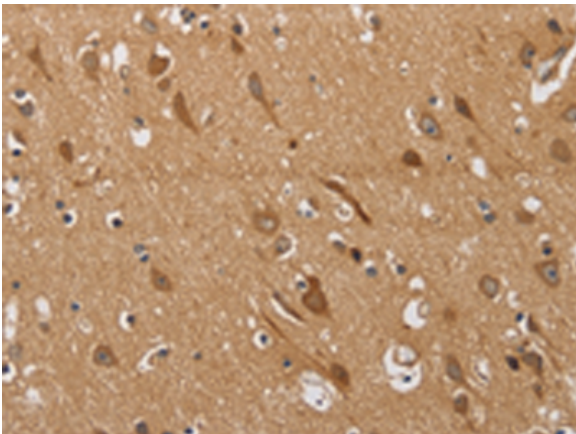
Storage & Shipping: Store at -20°C. Avoid repeated freezing and thawing



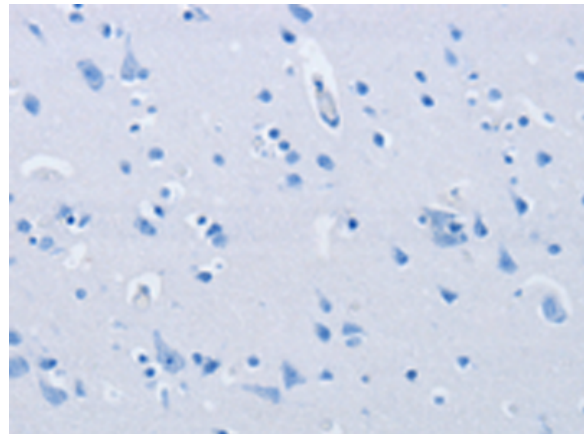
Immunohistochemistry analysis of paraffin embedded Human liver cancer tissue using 220654(KCNQ4 Antibody) at a dilution of 1/40(Cytoplasm).



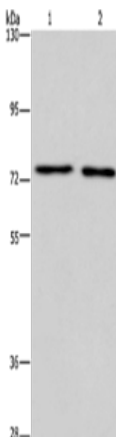
In comparison with the IHC on the left, the same paraffin-embedded Human liver cancer tissue is first treated with the synthetic peptide and then with 220654(Anti-KCNQ4 Antibody) at dilution 1/40.



The image on the left is immunohistochemistry of paraffin-embedded Human brain tissue using 220654(Anti-KCNQ4 Antibody) at a dilution of 1/40.



In comparison with the IHC on the left, the same paraffin-embedded Human brain tissue is first treated with synthetic peptide and then with D261827(Anti-KCNQ4 Antibody) at dilution 1/40.



Gel: 6%SDS-PAGE, Lysate: 40 µg;
Lane 1-2: Human fetal brain tissue, mouse brain tissue;
Primary antibody: 220654(KCNQ4 Antibody) at dilution 1/200;
Secondary antibody: Goat anti rabbit IgG at 1/8000 dilution;
Exposure time: 7 minutes



Product Description

Pioneering GTPase and Oncogene Product Development since 2010
