

KCTD17 RABBIT PAB

Cat.#: S218642

Product Name: Anti-KCTD17 Rabbit Polyclonal Antibody

Synonyms:

UNIPROT ID: Q8N5Z5 (Gene Accession - BC031038)

Background: This gene encodes a protein that belongs to a conserved family of potassium channel tetramerization domain (KCTD)-containing proteins. The encoded protein functions in ciliogenesis by acting as a substrate adaptor for the cullin3-based ubiquitin-conjugating enzyme E3 ligase, and targets trichoplein, a keratin-binding protein, for degradation via polyubiquitinylation. A mutation in this gene is associated with autosomal dominant myoclonic dystonia 26.

Immunogen: Fusion protein of human KCTD17

Applications: ELISA, IHC

Recommended Dilutions: IHC: Oct-50; ELISA: 2000-5000

Host Species: Rabbit

Clonality: Rabbit Polyclonal

Isotype: Immunogen-specific rabbit IgG

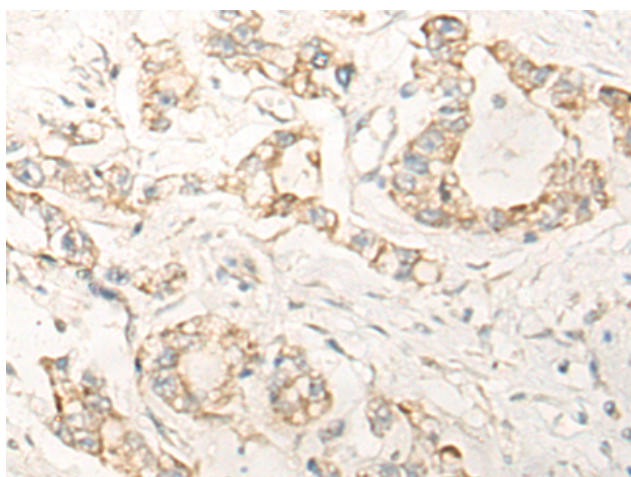
Purification: Antigen affinity purification

Species Reactivity: Human

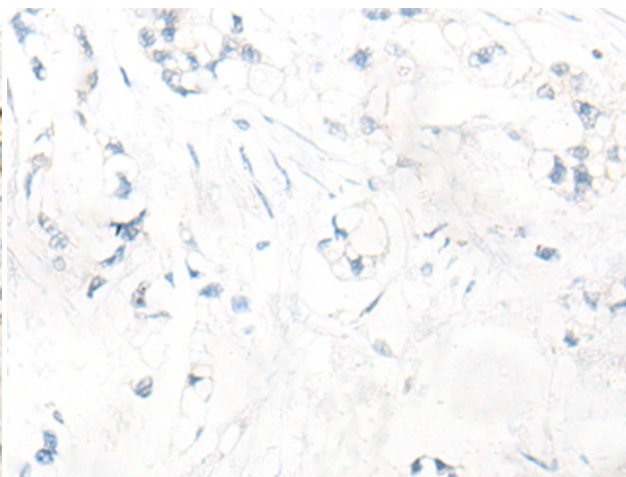
Constituents: PBS (without Mg²⁺ and Ca²⁺), pH 7.4, 150 mM NaCl, 0.05% Sodium Azide and 40% glycerol

Research Areas: Cell Biology, Neuroscience

Storage & Shipping: Store at -20°C. Avoid repeated freezing and thawing



Immunohistochemistry analysis of paraffin embedded Human gastric cancer tissue using 218642(KCTD17 Antibody) at a dilution of 1/20(Cytoplasm).



In comparison with the IHC on the left, the same paraffin-embedded Human gastric cancer tissue is first treated with the fusion protein and then with 218642(Anti-KCTD17 Antibody) at dilution 1/20.