

KCTD4 RABBIT PAB

Cat.#: S219299

Product Name: Anti-KCTD4 Rabbit Polyclonal Antibody

Synonyms: bA321C24.3

UNIPROT ID: Q8WVF5 (Gene Accession - BC018063)

Background: KCTD4 (potassium channel tetramerisation domain containing 4) is a 259 amino acid protein that contains one BTB domain, suggesting a possible role as a transcriptional regulator.

Immunogen: Fusion protein of human KCTD4

Applications: ELISA, IHC

Recommended Dilutions: IHC: 100-200; ELISA: 5000-10000

Host Species: Rabbit

Clonality: Rabbit Polyclonal

Isotype: Immunogen-specific rabbit IgG

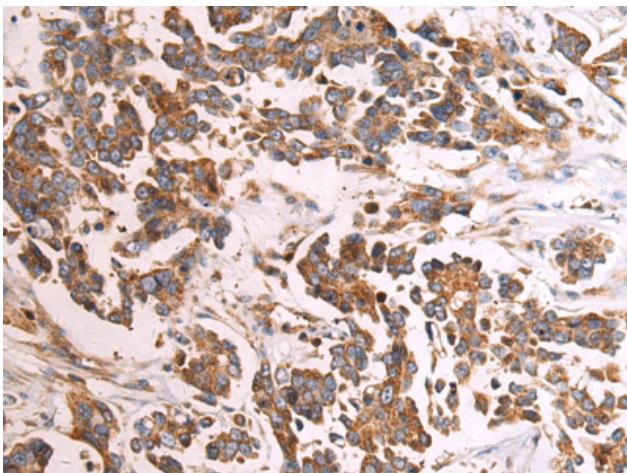
Purification: Antigen affinity purification

Species Reactivity: Human, Mouse

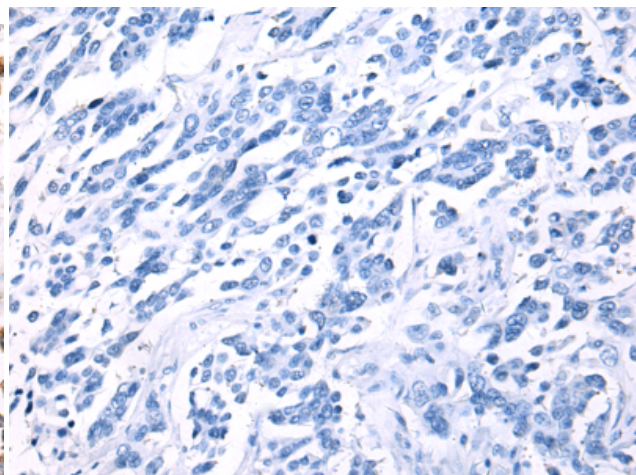
Constituents: PBS (without Mg²⁺ and Ca²⁺), pH 7.4, 150 mM NaCl, 0.05% Sodium Azide and 40% glycerol

Research Areas: Neuroscience, Signal Transduction

Storage & Shipping: Store at -20°C. Avoid repeated freezing and thawing



Immunohistochemistry analysis of paraffin embedded Human colorectal cancer tissue using 219299(KCTD4 Antibody) at a dilution of 1/135(Cytoplasm).



In comparison with the IHC on the left, the same paraffin-embedded Human colorectal cancer tissue is first treated with the fusion protein and then with 219299(Anti-KCTD4 Antibody) at dilution 1/135.