

## KCTD9 RABBIT MAB

**Cat.#:** N262443

**Product Name:** Anti-KCTD9 Rabbit Monoclonal Antibody

**Synonyms:** BTB/POZ domain-containing protein KCTD9

**UNIPROT ID:** Q7L273

**Background:** Substrate-specific adapter of a BCR (BTB-CUL3-RBX1) E3 ubiquitin-protein ligase complex, which mediates the ubiquitination of target proteins, leading to their degradation by the proteasome.

**Immunogen:** A synthetic peptide of human KCTD9

**Applications:** WB, ICC/IF

**Recommended Dilutions:** WB: 1/500-1/1000 IF: 1/50-1/200

**Host Species:** Rabbit

**Clonality:** Rabbit Monoclonal

**Clone ID:** R08-5H2

**MW:** Calculated MW: 43 kDa; Observed MW: 43 kDa

**Isotype:** IgG

**Purification:** Affinity Purified

**Species Reactivity:** Human

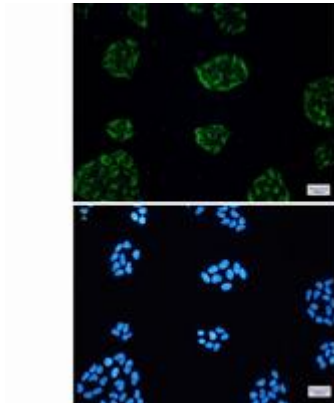
**Conjugation:** Unconjugated

**Modification:** Unmodified

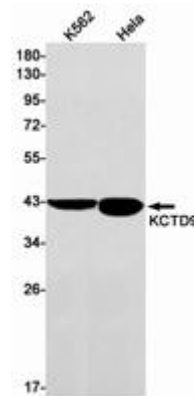
**Constituents:** PBS (without Mg<sup>2+</sup> and Ca<sup>2+</sup>), pH 7.3 containing 50% glycerol, 0.5% BSA and 0.02% sodium azide

**Research Areas:** Neuroscience

**Storage & Shipping:** Store at -20°C. Avoid repeated freezing and thawing



Immunocytochemistry analysis of KCTD9 (green) in HeLa using KCTD9 antibody, and DAPI (blue)



Western blot analysis of KCTD9 in K562, HeLa lysates using KCTD9 antibody.