

## KDEL RABBIT PAB

**Cat.#:** N225570

**Product Name:** Anti-KDEL Rabbit pAb

**Synonyms:** Lys-Asp-Glu-Leu (KDEL)

**UNIPROT ID:** P24390

**Background:** Determines the specificity of the luminal ER protein retention system. Required for the retention of luminal endoplasmic reticulum proteins. Determines the specificity of the luminal ER protein retention system. Also required for normal vesicular traffic through the Golgi. This receptor recognizes K-D-E-L.

**Immunogen:** A synthesized peptide derived from human KDEL

**Applications:** WB, IHC-P, ICC/IF, FC

**Recommended Dilutions:** WB: 1/500-1/1000 IHC: 1/50-1/100 IF: 1/50-1/200 FC: 1/50-1/100

**Host Species:** Rabbit

**Clonality:** Rabbit Polyclonal

**Clone ID:** -

**MW:** Calculated MW: 25 kDa; Observed MW: 78KD kDa

**Isotype:** IgG

**Purification:** Affinity Chromatography

**Species Reactivity:** Human, Mouse, Rat

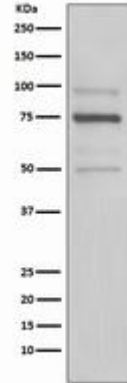
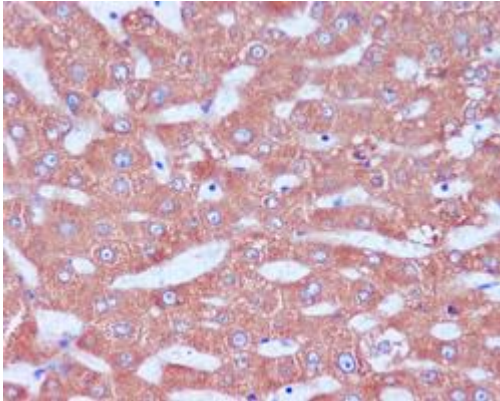
**Conjugation:** Unconjugated

**Modification:** Unmodified

**Constituents:** PBS (without Mg<sup>2+</sup> and Ca<sup>2+</sup>), pH 7.3 containing 50% glycerol, 0.5% BSA and 0.02% sodium azide

**Research Areas:** Tags & Cell Markers

**Storage & Shipping:** Store at -20°C. Avoid repeated freezing and thawing



Immunohistochemistry analysis of paraffin-embedded Human liver using KDEL antibody. High-pressure Sodium Citrate and temperature pH 6.0 was used for antigen retrieval.

Western blot analysis of KDEL in HeLa lysates using KDEL antibody.