

KDF1 RABBIT PAB

Cat.#: S215411

Product Name: Anti-KDF1 Rabbit Polyclonal Antibody

Synonyms: ECTD12; Clorf172

UNIPROT ID: Q8NAX2 (Gene Accession - NP_689578)

Background: Predicted to be involved in several processes, including positive regulation of epidermal cell differentiation; regulation of epidermal cell division; and skin development. Predicted to act upstream of or within keratinocyte development and negative regulation of keratinocyte proliferation. Located in cell junction; mitotic spindle; and nucleoplasm. Implicated in ectodermal dysplasia 12. [provided by Alliance of Genome Resources, Apr 2022]

Immunogen: Synthetic peptide of human KDF1

Applications: ELISA, IHC

Recommended Dilutions: IHC: 50–200; ELISA: 5000–10000

Host Species: Rabbit

Clonality: Rabbit Polyclonal

Isotype: Immunogen-specific rabbit IgG

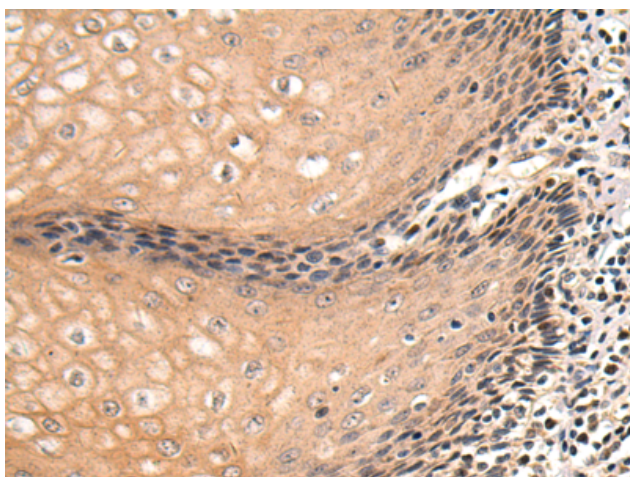
Purification: Antigen affinity purification

Species Reactivity: Human, Mouse, Rat

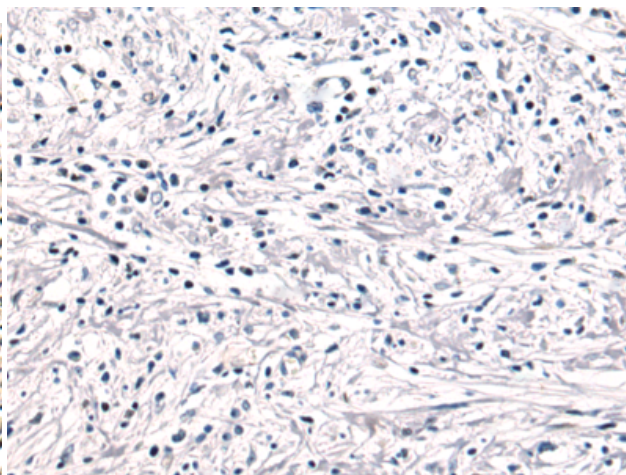
Constituents: PBS (without Mg²⁺ and Ca²⁺), pH 7.4, 150 mM NaCl, 0.05% Sodium Azide and 40% glycerol

Research Areas: Cell Biology

Storage & Shipping: Store at -20°C. Avoid repeated freezing and thawing



Immunohistochemistry analysis of paraffin embedded Human esophagus cancer tissue using 215411(KDF1 Antibody) at a dilution of 1/75(Cytoplasm).



In comparison with the IHC on the left, the same paraffin-embedded Human esophagus cancer tissue is first treated with the synthetic peptide and then with 215411(Anti-KDF1 Antibody) at dilution 1/75.