

## KDM1A (1E5) MOUSE MAB

**Cat.#:** N261003

**Product Name:** Anti-KDM1A (1E5) Mouse Monoclonal Antibody

**Synonyms:** KDM1A; AOF2; KDM1; KIAA0601; LSD1; Lysine-specific histone demethylase 1A; BRAF35-HDAC complex protein BHC110; Flavin-containing amine oxidase domain-containing protein 2

**UNIPROT ID:** O60341

**Background:** Histone demethylase that demethylates both 'Lys-4' (H3K4me) and 'Lys-9' (H3K9me) of histone H3, thereby acting as a coactivator or a corepressor, depending on the context. Acts by oxidizing the substrate by FAD to generate the corresponding imine that is subsequently hydrolyzed. Acts as a corepressor by mediating demethylation of H3K4me, a specific tag for epigenetic transcriptional activation. Demethylates both mono- (H3K4me1) and di-methylated (H3K4me2) H3K4me. May play a role in the repression of neuronal genes.

**Immunogen:** Purified recombinant human KDM1/LSD1 protein fragments expressed in E.coli.

**Applications:** WB,ICC/IF,IP

**Recommended Dilutions:** WB: 1/500-1/1000 IF: 1/50-1/200 IP: 1/20

**Host Species:** Mouse

**Clonality:** Mouse Monoclonal

**Clone ID:** 1E5-H2

**MW:** Calculated MW: 93 kDa; Observed MW: 110 kDa

**Isotype:** IgG1

**Purification:** Affinity Purified

**Species Reactivity:** Human,Monkey

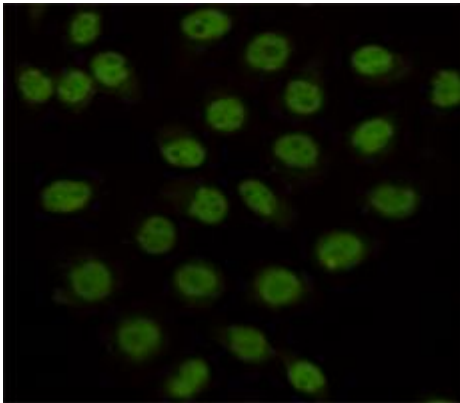
**Conjugation:** Unconjugated

**Modification:** Unmodified

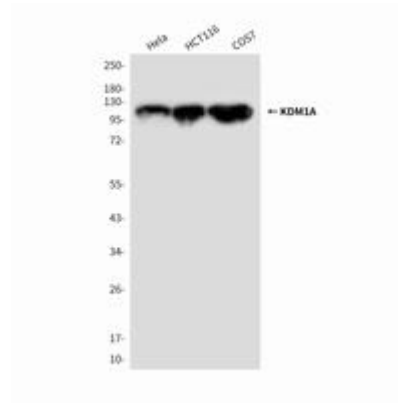
**Constituents:** PBS (without Mg<sup>2+</sup> and Ca<sup>2+</sup>), pH 7.3 containing 50% glycerol, 0.5% BSA and 0.02% sodium azide

**Research Areas:** Epigenetics,Histone methylation

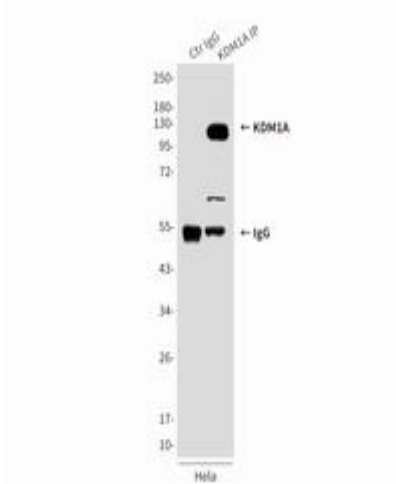
**Storage & Shipping:** Store at -20°C. Avoid repeated freezing and thawing



Immunocytochemistry analysis of KDM1A (1E5) in HeLa using KDM1/LSD1 antibody.



Western blot analysis of KDM1/LSD1 in HeLa, HCT116 and COS7 lysates using KDM1/LSD1 antibody.



Immunoprecipitation analysis of KDM1A (1E5) in HeLa lysates using KDM1/LSD1 antibody.