

KDM3B RABBIT PAB

Cat.#: S222292

Product Name: Anti-KDM3B Rabbit Polyclonal Antibody

Synonyms: 5qNCA; NET22; C5orf7; JMJD1B

UNIPROT ID: Q7LBC6 (Gene Accession - NP_057688)

Background: Histone demethylase that specifically demethylates 'Lys-9' of histone H3, thereby playing a central role in histone code. Demethylation of Lys residue generates formaldehyde and succinate. May have tumor suppressor activity.

Immunogen: Synthetic peptide of human KDM3B

Applications: ELISA, IHC

Recommended Dilutions: IHC: 30-150; ELISA: 5000-10000

Host Species: Rabbit

Clonality: Rabbit Polyclonal

Isotype: Immunogen-specific rabbit IgG

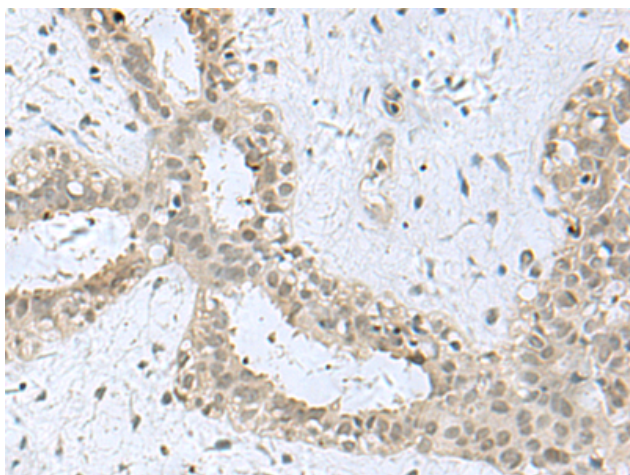
Purification: Antigen affinity purification

Species Reactivity: Human, Mouse

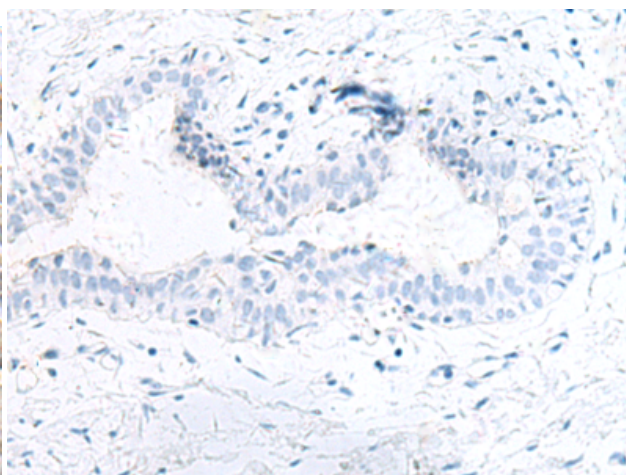
Constituents: PBS (without Mg²⁺ and Ca²⁺), pH 7.4, 150 mM NaCl, 0.05% Sodium Azide and 40% glycerol

Research Areas: Epigenetics and Nuclear Signaling, Cancer

Storage & Shipping: Store at -20°C. Avoid repeated freezing and thawing



Immunohistochemistry analysis of paraffin embedded Human breast cancer tissue using 222292(KDM3B Antibody) at a dilution of 1/40(Nucleus).



In comparison with the IHC on the left, the same paraffin-embedded Human breast cancer tissue is first treated with the synthetic peptide and then with 222292(Anti-KDM3B Antibody) at dilution 1/40.