

KDM5B RABBIT PAB

Cat.#: S214435

Product Name: Anti-KDM5B Rabbit Polyclonal Antibody

Synonyms: CT31; PLU1; PUT1; PLU-1; JARID1B; RBBP2H1A

UNIPROT ID: Q9UGL1 (Gene Accession - NP_006609)

Background: PLU-1 is a large (1,544 amino acid) nuclear protein that interacts with brain factor-1 (BF-1) and paired box 9 (PAX9), both of which are developmental transcription factors. PLU-1 belongs to the testis-cancer antigen group of proteins and is a member of the ARID family of DNA binding proteins. It is a multi-domain protein with strong transcriptional repression properties. PLU-1 shows restricted expression in adult tissues, with high expression in testis and transient expression in the pregnant mammary gland. Both the PLU-1 gene and the PLU-1 protein product are specifically upregulated in breast cancer. PLU-1 may be important in meiotic transcription because of its apparent association with chromatin.

Immunogen: Synthetic peptide of human KDM5B

Applications: ELISA, IHC

Recommended Dilutions: IHC: 50-200; ELISA: 2000-10000

Host Species: Rabbit

Clonality: Rabbit Polyclonal

Isotype: Immunogen-specific rabbit IgG

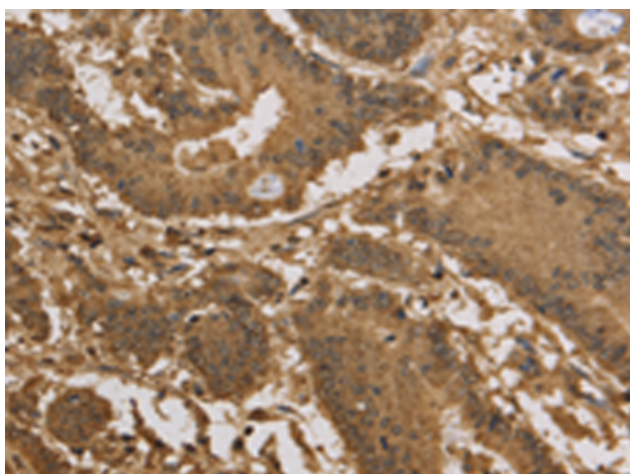
Purification: Antigen affinity purification

Species Reactivity: Human, Mouse

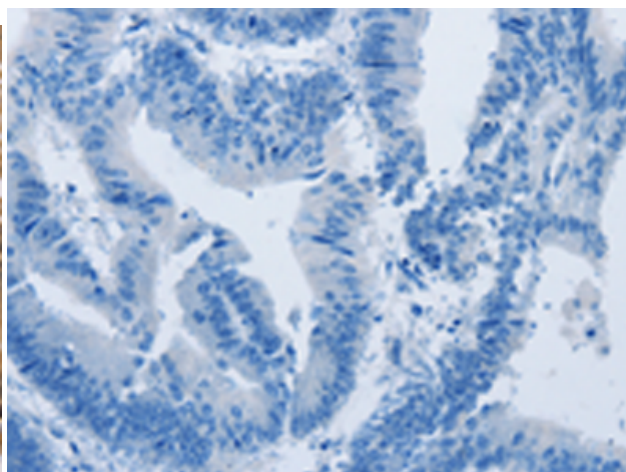
Constituents: PBS (without Mg²⁺ and Ca²⁺), pH 7.4, 150 mM NaCl, 0.05% Sodium Azide and 40% glycerol

Research Areas: Epigenetics and Nuclear Signaling

Storage & Shipping: Store at -20°C. Avoid repeated freezing and thawing



Immunohistochemistry analysis of paraffin embedded Human colon cancer tissue using 214435(KDM5B Antibody) at a dilution of 1/40(Nucleus).



In comparison with the IHC on the left, the same paraffin-embedded Human colon cancer tissue is first treated with the synthetic peptide and then with 214435(Anti-KDM5B Antibody) at dilution 1/40.



Product Description

Pioneering GTPase and Oncogene Product Development since 2010
