

KI67 (10B6) MOUSE MAB

Cat.#: N261192

Product Name: Anti-Ki67 (10B6) Mouse Monoclonal Antibody

Synonyms: MKI67; Antigen KI-67

UNIPROT ID: P46013

Background: Required to maintain individual mitotic chromosomes dispersed in the cytoplasm following nuclear envelope disassembly (PubMed:27362226). Associates with the surface of the mitotic chromosome, the perichromosomal layer, and covers a substantial fraction of the chromosome surface (PubMed:27362226).

Immunogen: Synthetic peptide corresponding to aa (CEDLAGFKELFQTPG) of human KI67, conjugated to KLH.

Applications: IHC-P

Recommended Dilutions: IHC: 1/50-1/100

Host Species: Mouse

Clonality: Mouse Monoclonal

Clone ID: 10B6-7D9-9H1

MW: -

Isotype: IgG2b

Purification: Ascitic Fluid

Species Reactivity: Human

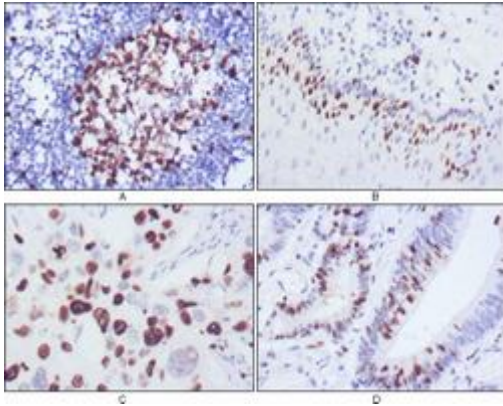
Conjugation: Unconjugated

Modification: Unmodified

Constituents: PBS (without Mg²⁺ and Ca²⁺), pH 7.3 containing 50% glycerol, 0.5% BSA and 0.02% sodium azide

Research Areas: Cell Biology

Storage & Shipping: Store at -20°C. Avoid repeated freezing and thawing



Immunohistochemistry analysis of paraffin-embedded Human lymph node (A), esophagus (B), lung cancer (C), rectum cancer (D), using Ki67 (10B6) antibody with DAB staining. High-pressure and temperature Sodium Citrate pH 6.0 was used for antigen retrieval.