

KIF26B RABBIT PAB

Cat.#: S219584

Product Name: Anti-KIF26B Rabbit Polyclonal Antibody

Synonyms:

UNIPROT ID: Q2KJY2 (Gene Accession - BC042481)

Background: The protein encoded by this gene is an intracellular motor protein thought to transport organelles along microtubules. The encoded protein is required for kidney development. Elevated levels of this protein have been found in some breast and colorectal cancers.

Immunogen: Fusion protein of human KIF26B

Applications: ELISA, IHC

Recommended Dilutions: IHC: 50-200; ELISA: 5000-10000

Host Species: Rabbit

Clonality: Rabbit Polyclonal

Isotype: Immunogen-specific rabbit IgG

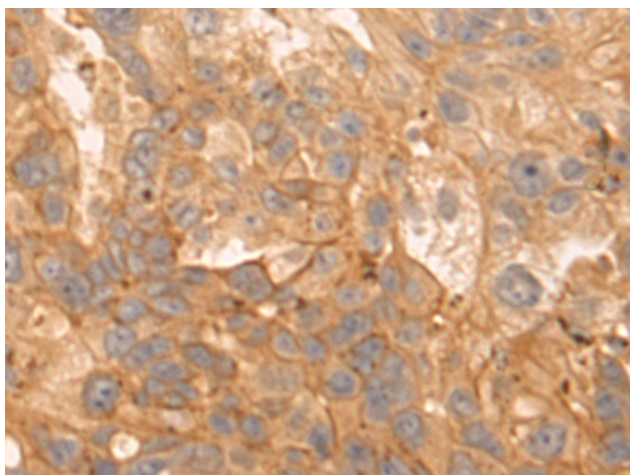
Purification: Antigen affinity purification

Species Reactivity: Human

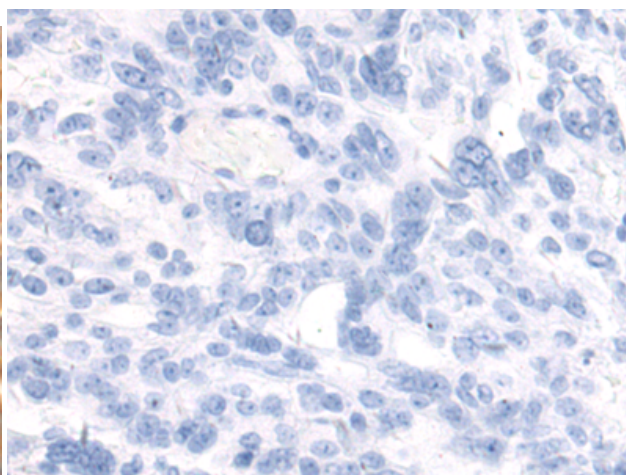
Constituents: PBS (without Mg²⁺ and Ca²⁺), pH 7.4, 150 mM NaCl, 0.05% Sodium Azide and 40% glycerol

Research Areas: Signal Transduction, Developmental Biology

Storage & Shipping: Store at -20°C. Avoid repeated freezing and thawing



Immunohistochemistry analysis of paraffin embedded Human breast cancer tissue using 219584(KIF26B Antibody) at a dilution of 1/55(Cytoplasm).



In comparison with the IHC on the left, the same paraffin-embedded Human breast cancer tissue is first treated with the fusion protein and then with 219584(Anti-KIF26B Antibody) at dilution 1/55.