

## KIF2C RABBIT PAB

**Cat.#:** S218776

**Product Name:** Anti-KIF2C Rabbit Polyclonal Antibody

**Synonyms:** MCAK; CT139; KNSL6

**UNIPROT ID:** Q99661 (Gene Accession - BC014924 )

**Background:** This gene encodes a kinesin-like protein that functions as a microtubule-dependent molecular motor. The encoded protein can depolymerize microtubules at the plus end, thereby promoting mitotic chromosome segregation. Alternative splicing results in multiple transcript variants.

**Immunogen:** Fusion protein of human KIF2C

**Applications:** ELISA, IHC

**Recommended Dilutions:** IHC: 50-200; ELISA: 5000-10000

**Host Species:** Rabbit

**Clonality:** Rabbit Polyclonal

**Isotype:** Immunogen-specific rabbit IgG

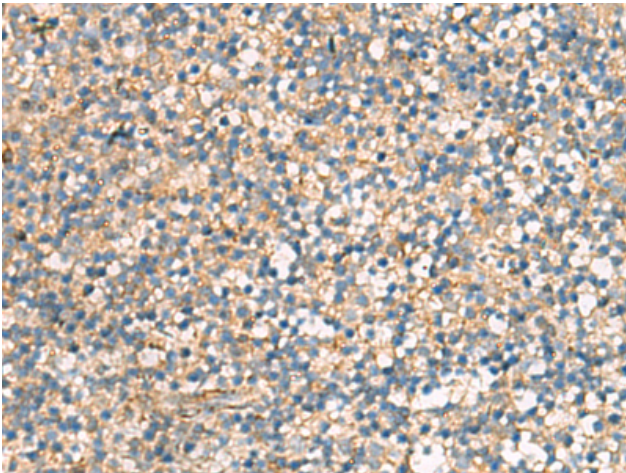
**Purification:** Antigen affinity purification

**Species Reactivity:** Human, Mouse, Rat

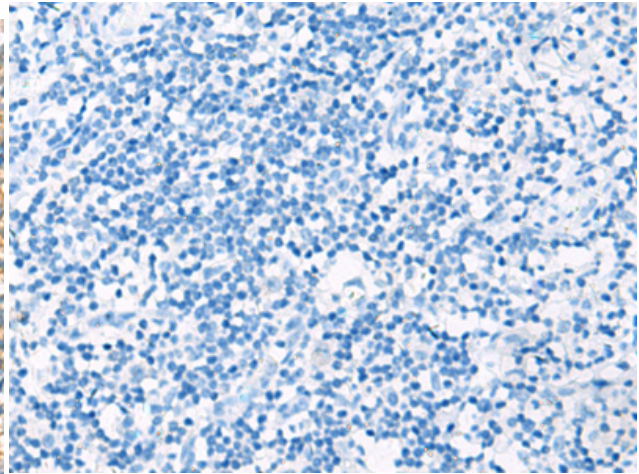
**Constituents:** PBS (without Mg<sup>2+</sup> and Ca<sup>2+</sup>), pH 7.4, 150 mM NaCl, 0.05% Sodium Azide and 40% glycerol

**Research Areas:** Signal Transduction

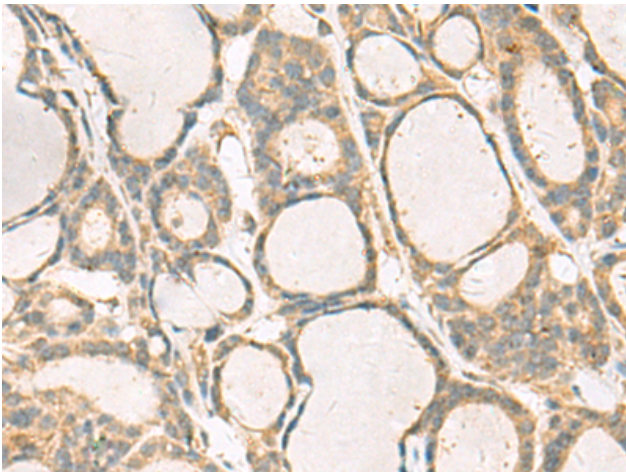
**Storage & Shipping:** Store at -20°C. Avoid repeated freezing and thawing



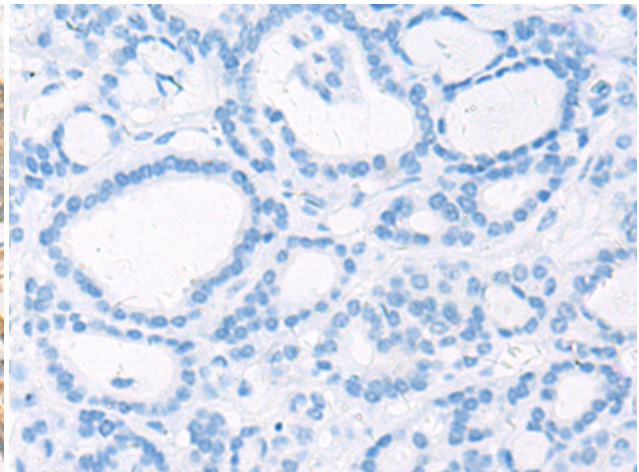
Immunohistochemistry analysis of paraffin embedded Human tonsil tissue using 218776(KIF2C Antibody) at a dilution of 1/70(Cytoplasm).



In comparison with the IHC on the left, the same paraffin-embedded Human tonsil tissue is first treated with the fusion protein and then with 218776(Anti-KIF2C Antibody) at dilution 1/70.



The image on the left is immunohistochemistry of paraffin-embedded Human thyroid cancer tissue using 218776(Anti-KIF2C Antibody) at a dilution of 1/70.



In comparison with the IHC on the left, the same paraffin-embedded Human thyroid cancer tissue is first treated with fusion protein and then with D225154(Anti-KIF2C Antibody) at dilution 1/70.