

KIF5A RABBIT PAB

Cat.#: S222332

Product Name: Anti-KIF5A Rabbit Polyclonal Antibody

Synonyms: NKHC; ALS25; MY050; NEIMY; SPG10; D12S1889

UNIPROT ID: Q12840 (Gene Accession - NP_004975)

Background: This gene encodes a member of the kinesin family of proteins. Members of this family are part of a multisubunit complex that functions as a microtubule motor in intracellular organelle transport. Mutations in this gene cause autosomal dominant spastic paraplegia 10. [provided by RefSeq, Jul 2008]

Immunogen: Synthetic peptide of human KIF5A

Applications: ELISA, IHC

Recommended Dilutions: IHC: 50-100; ELISA: 500-1000

Host Species: Rabbit

Clonality: Rabbit Polyclonal

Isotype: Immunogen-specific rabbit IgG

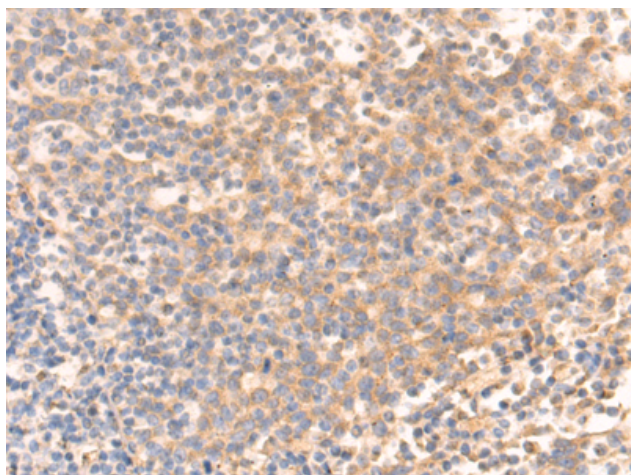
Purification: Antigen affinity purification

Species Reactivity: Human, Mouse, Rat

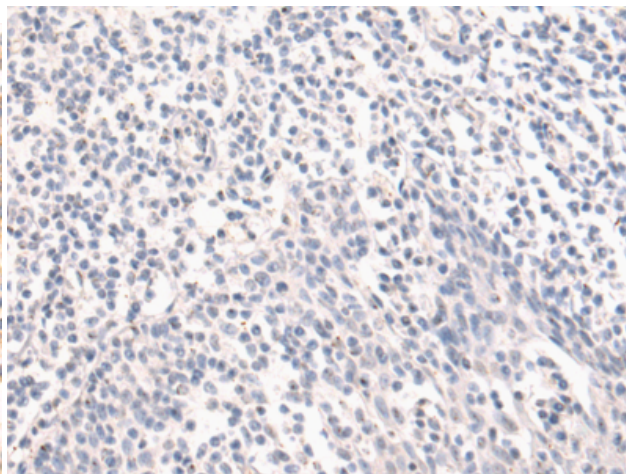
Constituents: PBS (without Mg²⁺ and Ca²⁺), pH 7.4, 150 mM NaCl, 0.05% Sodium Azide and 40% glycerol

Research Areas: Signal Transduction

Storage & Shipping: Store at -20°C. Avoid repeated freezing and thawing



Immunohistochemistry analysis of paraffin embedded Human tonsil tissue using 222332(KIF5A Antibody) at a dilution of 1/50(Cytoplasm).



In comparison with the IHC on the left, the same paraffin-embedded Human tonsil tissue is first treated with the synthetic peptide and then with 222332(Anti-KIF5A Antibody) at dilution 1/50.