

## KIF5B RABBIT MAB

**Cat.#:** N262447

**Product Name:** Anti-KIF5B Rabbit Monoclonal Antibody

**Synonyms:** KNS; KINH; KNS1; UKHC; HEL-S-61

**UNIPROT ID:** P33176

**Background:** Microtubule-dependent motor required for normal distribution of mitochondria and lysosomes. Can induce formation of neurite-like membrane protrusions in non-neuronal cells in a ZFYVE27-dependent manner. Regulates centrosome and nuclear positioning during mitotic entry. During the G2 phase of the cell cycle in a BICD2-dependent manner, antagonizes dynein function and drives the separation of nuclei and centrosomes (PubMed:20386726). Required for anterograde axonal transportation of MAPK8IP3/JIP3 which is essential for MAPK8IP3/JIP3 function in axon elongation.

**Immunogen:** A synthetic peptide of human KIF5B

**Applications:** WB,IHC-F,IHC-P,ICC/IF,IP

**Recommended Dilutions:** WB: 1/500-1/1000 IHC: 1/50-1/100 IF: 1/50-1/200 IP: 1/20

**Host Species:** Rabbit

**Clonality:** Rabbit Monoclonal

**Clone ID:** R04-6G8

**MW:** Calculated MW: 110 kDa; Observed MW: 110 kDa

**Isotype:** IgG

**Purification:** Affinity Purified

**Species Reactivity:** Human,Mouse,Rat

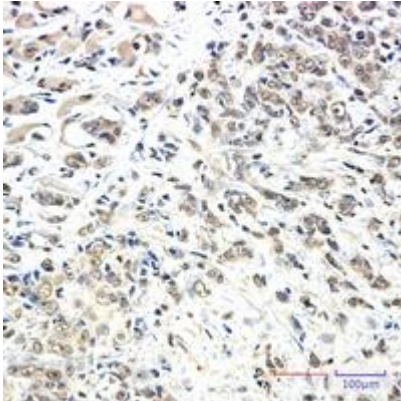
**Conjugation:** Unconjugated

**Modification:** Unmodified

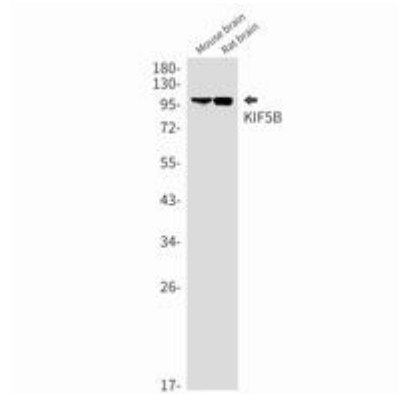
**Constituents:** PBS (without Mg<sup>2+</sup> and Ca<sup>2+</sup>), pH 7.3 containing 50% glycerol, 0.5% BSA and 0.02% sodium azide

**Research Areas:** Signal Transduction

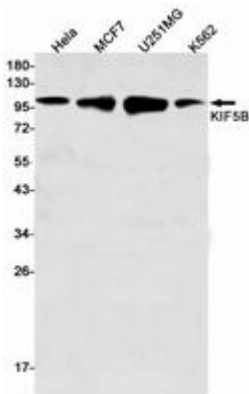
**Storage & Shipping:** Store at -20°C. Avoid repeated freezing and thawing



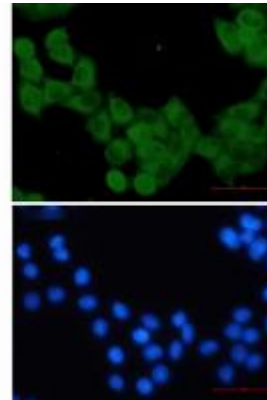
Immunohistochemistry analysis of paraffin-embedded Human breast cancer using KIF5B antibody. High-pressure and temperature Sodium Citrate pH 6.0 was used for antigen retrieval.



Western blot analysis of KIF5B in mouse brain, rat brain lysates using KIF5B antibody.



Western blot analysis of KIF5B in HeLa, MCF-7, U251MG, K562 lysates using KIF5B antibody.



Immunocytochemistry analysis of KIF5B (green) in HeLa using KIF5B antibody, and DAPI (blue).