

KIFAP3 RABBIT MAB

Cat.#: N263394

Product Name: Anti-KIFAP3 Rabbit Monoclonal Antibody

Synonyms: KAP3; KIF3AP; Kifap3; Kinesin associated protein 3; SMAP

UNIPROT ID: Q92845

Background: Involved in tethering the chromosomes to the spindle pole and in chromosome movement. Binds to the tail domain of the KIF3A/KIF3B heterodimer to form a heterotrimeric KIF3 complex and may regulate the membrane binding of this complex.

Immunogen: A synthetic peptide of human KIFAP3

Applications: WB,IHC-P

Recommended Dilutions: WB: 1/500-1/1000 IHC: 1/50-1/100

Host Species: Rabbit

Clonality: Rabbit Monoclonal

Clone ID: R03-6C6

MW: Calculated MW: 91 kDa; Observed MW: 91 kDa

Isotype: IgG

Purification: Affinity Purified

Species Reactivity: Human,Rat

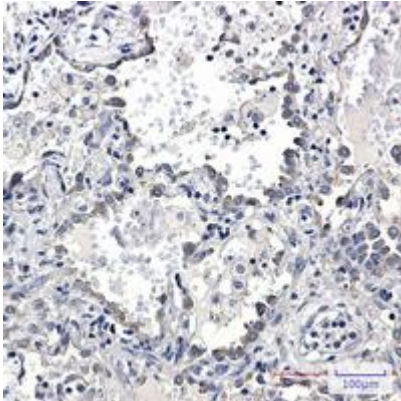
Conjugation: Unconjugated

Modification: Unmodified

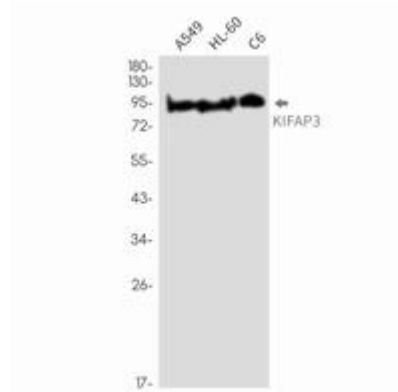
Constituents: PBS (without Mg²⁺ and Ca²⁺), pH 7.3 containing 50% glycerol, 0.5% BSA and 0.02% sodium azide

Research Areas: Epigenetics and Nuclear Signaling

Storage & Shipping: Store at -20°C. Avoid repeated freezing and thawing



Immunohistochemistry analysis of paraffin-embedded Human lung cancer using KIFAP3 antibody. High-pressure and temperature Sodium Citrate pH 6.0 was used for antigen retrieval.



Western blot analysis of KIFAP3 in A549, HL-60, C6 lysates using KIFAP3 antibody.