

KIFC1 RABBIT MAB

Cat.#: N262448

Product Name: Anti-KIFC1 Rabbit Monoclonal Antibody

Synonyms: HSET; KNSL2

UNIPROT ID: Q9BW19

Background: Minus end-directed microtubule-dependent motor required for bipolar spindle formation. May contribute to movement of early endocytic vesicles.

Immunogen: A synthetic peptide of human KIFC1

Applications: WB,IHC-F,IHC-P,ICC/IF,IP

Recommended Dilutions: WB: 1/500-1/1000 IHC: 1/50-1/100 IF: 1/50-1/200 IP: 1/20

Host Species: Rabbit

Clonality: Rabbit Monoclonal

Clone ID: R03-3E4

MW: Calculated MW: 74 kDa; Observed MW: 74 kDa

Isotype: IgG

Purification: Affinity Purified

Species Reactivity: Human,Mouse

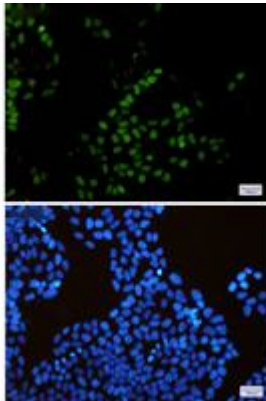
Conjugation: Unconjugated

Modification: Unmodified

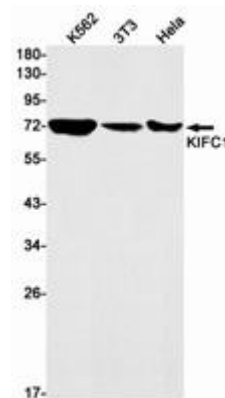
Constituents: PBS (without Mg²⁺ and Ca²⁺), pH 7.3 containing 50% glycerol, 0.5% BSA and 0.02% sodium azide

Research Areas: Signal Transduction

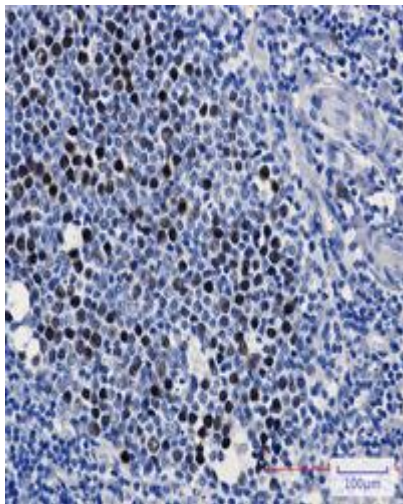
Storage & Shipping: Store at -20°C. Avoid repeated freezing and thawing



Immunocytochemistry analysis of KIFC1 (green) in HeLa using KIFC1 antibody, and DAPI (blue)



Western blot analysis of KIFC1 in K562, 3T3, HeLa lysates using KIFC1 antibody.



Immunohistochemistry analysis of paraffin-embedded Human tonsil using KIFC1 antibody. High-pressure and temperature Sodium Citrate pH 6.0 was used for antigen retrieval.