

KIR2DL5A RABBIT PAB

Cat.#: S222298

Product Name: Anti-KIR2DL5A Rabbit Polyclonal Antibody

Synonyms: CD158F; KIR2DL5; KIR2DL5.1; KIR2DL5.3

UNIPROT ID: Q8N109 (Gene Accession - NP_065396)

Background:

Immunogen: Synthetic peptide of human KIR2DL5A

Applications: ELISA, WB, IHC

Recommended Dilutions: IHC: although several "framework" genes are found in all haplotypes (KIR3DL3;

Host Species: Rabbit

Clonality: Rabbit Polyclonal

Isotype: Immunogen-specific rabbit IgG

Purification: Antigen affinity purification

Species Reactivity: Human

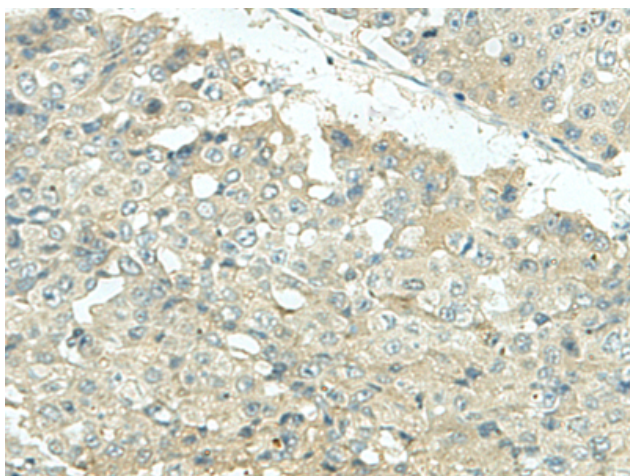
Constituents: PBS (without Mg²⁺ and Ca²⁺), pH 7.4, 150 mM NaCl, 0.05% Sodium Azide and 40% glycerol

Research Areas: Immunology

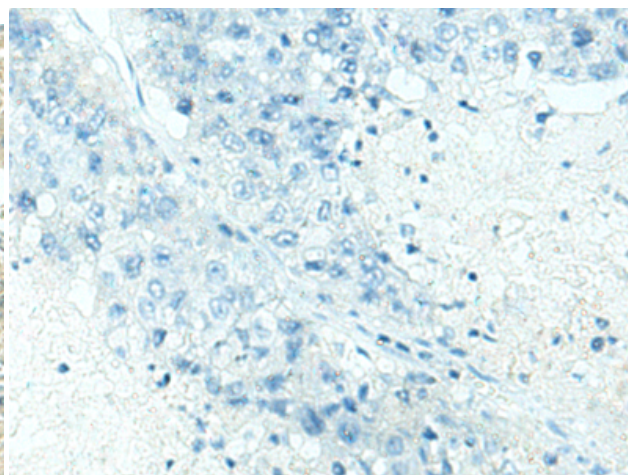
Storage & Shipping: Store at -20°C. Avoid repeated freezing and thawing

✘
KIR3DL4

✘
while KIR proteins with the short cytoplasmic domain lack the ITIM motif and instead associate with the TYRO protein tyrosine kinase binding protein to transduce activating signals. The ligands for several KIR proteins are subsets of HLA class I molecules; thus



Immunohistochemistry analysis of paraffin embedded Human liver cancer tissue using 222298(KIR2DL5A Antibody) at a dilution of 1/35(Cytoplasm).



In comparison with the IHC on the left, the same paraffin-embedded Human liver cancer tissue is first treated with the synthetic peptide and then with D264353(Anti-KIR2DL5A Antibody) at dilution 1/35.



Product Description

Pioneering GTPase and Oncogene Product Development since 2010
