

KLC2 RABBIT PAB

Cat.#: S219160

Product Name: Anti-KLC2 Rabbit Polyclonal Antibody

Synonyms:

UNIPROT ID: Q9H0B6 (Gene Accession - BC034373)

Background: The protein encoded by this gene is a light chain of kinesin, a molecular motor responsible for moving vesicles and organelles along microtubules. Defects in this gene are a cause of spastic paraplegia, optic atrophy, and neuropathy (SPOAN) syndrome.

Immunogen: Fusion protein of human KLC2

Applications: ELISA, WB, IHC

Recommended Dilutions: IHC: 150-300;WB: 500-2000;ELISA: 5000-10000

Host Species: Rabbit

Clonality: Rabbit Polyclonal

Isotype: Immunogen-specific rabbit IgG

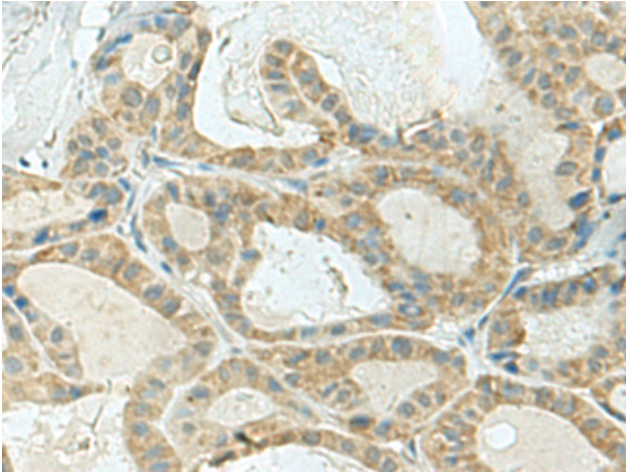
Purification: Antigen affinity purification

Species Reactivity: Human, Mouse

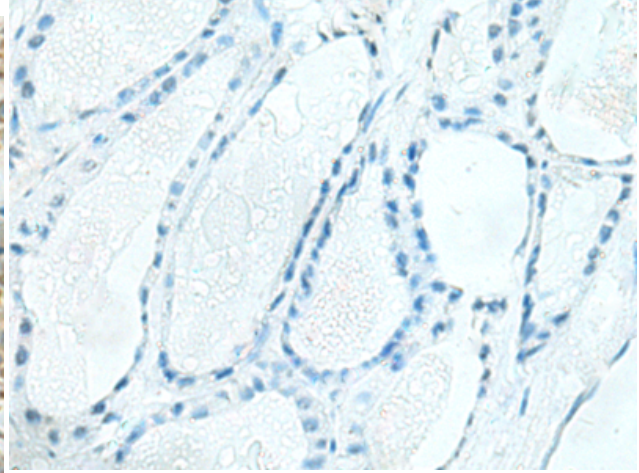
Constituents: PBS (without Mg²⁺ and Ca²⁺), pH 7.4, 150 mM NaCl, 0.05% Sodium Azide and 40% glycerol

Research Areas: Signal Transduction

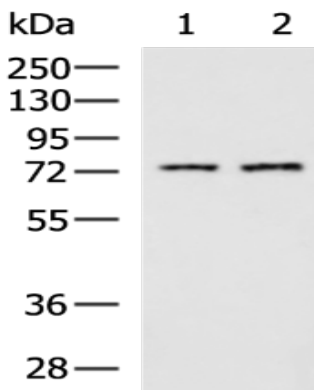
Storage & Shipping: Store at -20°C. Avoid repeated freezing and thawing



Immunohistochemistry analysis of paraffin embedded Human thyroid cancer tissue using 219160(KLC2 Antibody) at a dilution of 1/120(Cytoplasm).



In comparison with the IHC on the left, the same paraffin-embedded Human thyroid cancer tissue is first treated with the fusion protein and then with 219160(Anti-KLC2 Antibody) at dilution 1/120.



Gel: 8%SDS-PAGE, Lysate: 40 µg;
 Lane 1-2: Human cerebrum tissue and Mouse brain tissue lysates;
 Primary antibody: 219160(KLC2 Antibody) at dilution 1/800;
 Secondary antibody: HRP-conjugated Goat anti rabbit IgG at 1/5000 dilution;
 Exposure time: 10 seconds