

KLF12 RABBIT PAB

Cat.#: N225104

Product Name: Anti-KLF12 Rabbit pAb

Synonyms: KLF12; AP2REP; HSPC122; Krueppel-like factor 12; Transcriptional repressor AP-2rep

UNIPROT ID: Q9Y4X4

Background: Confers strong transcriptional repression to the AP-2-alpha gene.

Immunogen: Synthesized peptide derived from the Internal region of human KLF12.

Applications: WB,IHC-P,ELISA

Recommended Dilutions: WB: 1/500-1/1000 IHC: 1/50-1/100 ELISA: 1/10000

Host Species: Rabbit

Clonality: Rabbit Polyclonal

Clone ID: -

MW: Calculated MW: 44 kDa; Observed MW: 44 kDa

Isotype: IgG

Purification: Affinity Purified

Species Reactivity: Human,Mouse

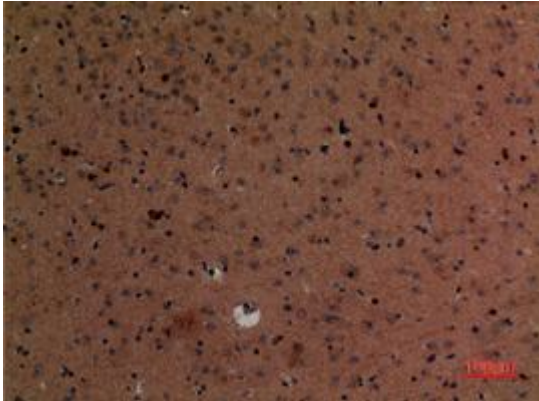
Conjugation: Unconjugated

Modification: Unmodified

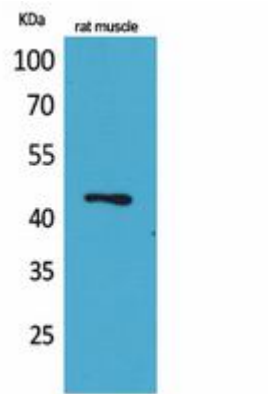
Constituents: PBS (without Mg²⁺ and Ca²⁺), pH 7.3 containing 50% glycerol, 0.5% BSA and 0.02% sodium azide

Research Areas: Epigenetics and Nuclear Signaling

Storage & Shipping: Store at -20°C. Avoid repeated freezing and thawing



Immunohistochemistry analysis of paraffin-embedded mouse brain using KLF12 antibody. High-pressure and temperature Sodium Citrate pH 6.0 was used for antigen retrieval.



Western blot analysis of KLF12 in rat muscle lysates using KLF12 antibody.