

KLF4 RABBIT MAB

Cat.#: N263395

Product Name: Anti-KLF4 Rabbit Monoclonal Antibody

Synonyms: EZF; Zie; Gklf

UNIPROT ID: Q60793

Background: Transcription factor; can act both as activator and as repressor. Binds the 5'-CACCC-3' core sequence.

Immunogen: Recombinant protein of mouse KLF4

Applications: WB,IHC-P,IP

Recommended Dilutions: WB: 1/500-1/1000 IHC: 1/50-1/100 IP: 1/20

Host Species: Rabbit

Clonality: Rabbit Monoclonal

Clone ID: R03-218

MW: Calculated MW: 52 kDa; Observed MW: 52 kDa

Isotype: IgG

Purification: Affinity Purified

Species Reactivity: Human,Mouse,Hamster

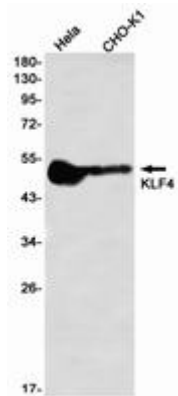
Conjugation: Unconjugated

Modification: Unmodified

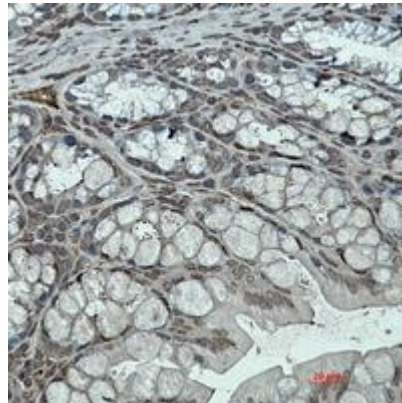
Constituents: PBS (without Mg²⁺ and Ca²⁺), pH 7.3 containing 50% glycerol, 0.5% BSA and 0.02% sodium azide

Research Areas: Epigenetics and Nuclear Signaling

Storage & Shipping: Store at -20°C. Avoid repeated freezing and thawing



Western blot analysis of KLF4 in HeLa, CHO-K1 lysates using KLF4 antibody.



Immunohistochemistry analysis of paraffin-embedded mouse colon using KLF4 antibody. High-pressure and temperature Sodium Citrate pH 6.0 was used for antigen retrieval.