

KLF5 RABBIT PAB

Cat.#: S213622

Product Name: Anti-KLF5 Rabbit Polyclonal Antibody

Synonyms: CKLF; IKLF; BTEB2

UNIPROT ID: Q13887 (Gene Accession - NP_001721)

Background: This gene encodes a member of the Kruppel-like factor subfamily of zinc finger proteins. The encoded protein is a transcriptional activator that binds directly to a specific recognition motif in the promoters of target genes. This protein acts downstream of multiple different signaling pathways and is regulated by post-translational modification. It may participate in both promoting and suppressing cell proliferation. Expression of this gene may be changed in a variety of different cancers and in cardiovascular disease. Alternative splicing results in multiple transcript variants.

Immunogen: Synthetic peptide of human KLF5

Applications: ELISA, WB, IHC

Recommended Dilutions: IHC: 100-300;WB: 500-2000;ELISA: 1000-5000

Host Species: Rabbit

Clonality: Rabbit Polyclonal

Isotype: Immunogen-specific rabbit IgG

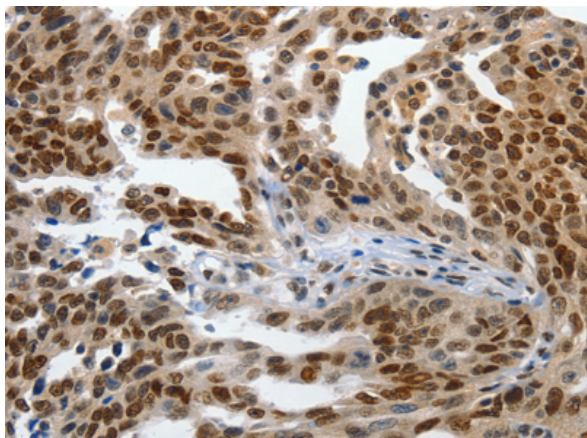
Purification: Antigen affinity purification

Species Reactivity: Human, Mouse

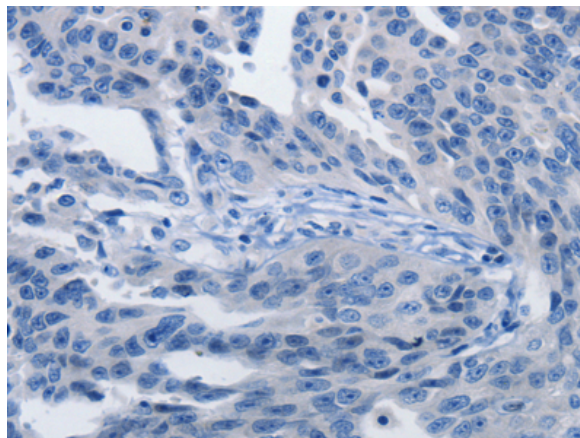
Constituents: PBS (without Mg²⁺ and Ca²⁺), pH 7.4, 150 mM NaCl, 0.05% Sodium Azide and 40% glycerol

Research Areas: Epigenetics and Nuclear Signaling, Cancer, Cardiovascular, Stem Cells

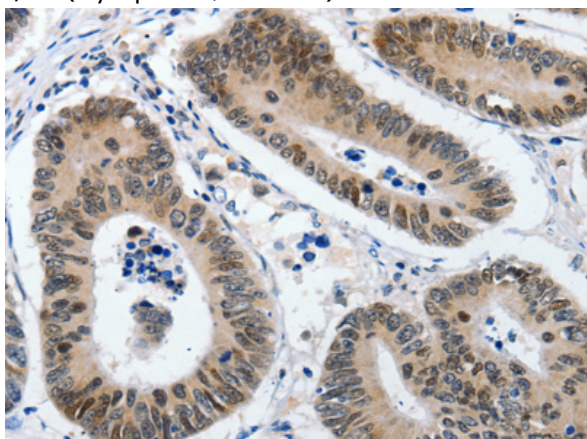
Storage & Shipping: Store at -20°C. Avoid repeated freezing and thawing



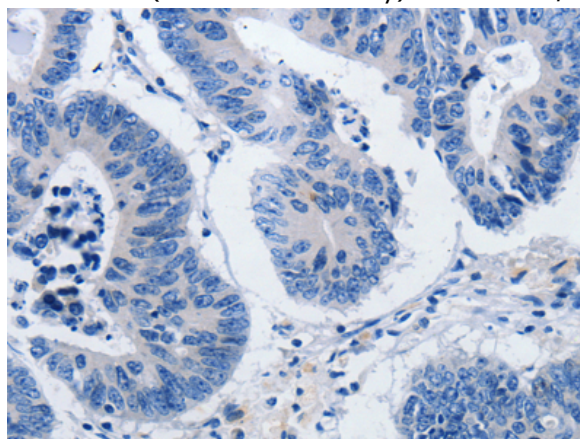
Immunohistochemistry analysis of paraffin embedded Human ovarian cancer tissue using 213622(KLF5 Antibody) at a dilution of 1/120(Cytoplasm, Nucleus).



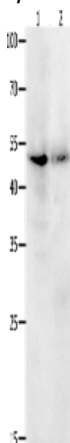
In comparison with the IHC on the left, the same paraffin-embedded Human ovarian cancer tissue is first treated with the synthetic peptide and then with 213622(Anti-KLF5 Antibody) at dilution 1/120.



The image on the left is immunohistochemistry of paraffin-embedded Human colon cancer tissue using 213622(Anti-KLF5 Antibody) at a dilution of 1/120.



In comparison with the IHC on the left, the same paraffin-embedded Human colon cancer tissue is first treated with synthetic peptide and then with D160534(Anti-KLF5 Antibody) at dilution 1/120.



Gel: 10+12+15%SDS-PAGE, Lysate: 40 µg;
Lane 1-2: Jurkat cells, human ovarian cancer tissue;
Primary antibody: 213622(KLF5 Antibody) at dilution 1/1700;
Secondary antibody: Goat anti rabbit IgG at 1/8000 dilution;
Exposure time: 20 seconds



Product Description

Pioneering GTPase and Oncogene Product Development since 2010
