

## KLHDC2 RABBIT PAB

**Cat.#:** S218687

**Product Name:** Anti-KLHDC2 Rabbit Polyclonal Antibody

**Synonyms:** LCP; HCLP1; HCLP-1

**UNIPROT ID:** Q9Y2U9 (Gene Accession - BC002335 )

**Background:** Represses CREB3-mediated transcription by interfering with CREB3-DNA binding.

**Immunogen:** Fusion protein of human KLHDC2

**Applications:** ELISA, IHC

**Recommended Dilutions:** IHC: 30-150; ELISA: 5000-10000

**Host Species:** Rabbit

**Clonality:** Rabbit Polyclonal

**Isotype:** Immunogen-specific rabbit IgG

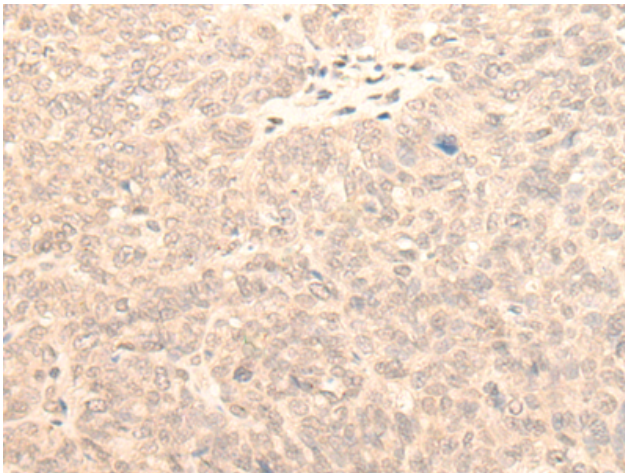
**Purification:** Antigen affinity purification

**Species Reactivity:** Human, Mouse, Rat

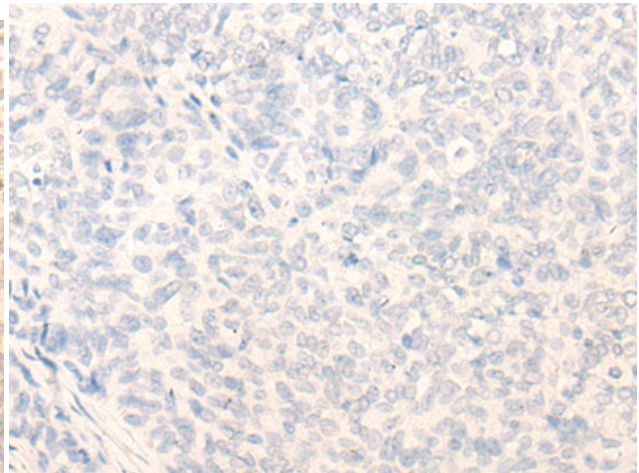
**Constituents:** PBS (without Mg<sup>2+</sup> and Ca<sup>2+</sup>), pH 7.4, 150 mM NaCl, 0.05% Sodium Azide and 40% glycerol

**Research Areas:** Epigenetics and Nuclear Signaling

**Storage & Shipping:** Store at -20°C. Avoid repeated freezing and thawing



Immunohistochemistry analysis of paraffin embedded Human ovarian cancer tissue using 218687(KLHDC2 Antibody) at a dilution of 1/20(Nucleus).



In comparison with the IHC on the left, the same paraffin-embedded Human ovarian cancer tissue is first treated with the fusion protein and then with 218687(Anti-KLHDC2 Antibody) at dilution 1/20.